



US Cabinet Depot is a blend of cabinetry professionals from many different areas of the cabinet industry. This mix of knowledge and experience has allowed us to build a company that truly understands the needs of its customers. Our focus is on providing products that exceed our customers' expectations in quality, price and service.

Quality:

Our products are designed to the highest standards in style and function. We start by selecting only high quality raw materials, hardware, adhesives and finishes. This bundle of superior components is the first step to securing your long term satisfaction.

The second step is a state of the art manufacturing process which ensures consistent production across the board. We have worked diligently to cut out waste and eliminate bottle necks. New manufacturing technologies are quickly implemented as they become available to the industry. The result is streamlined and efficient production costs which support a very competitive sales price for our products.

The final step is thorough inspections. Components are inspected for quality at the completion of each step of the manufacturing process. When the entire process is complete, each batch of product is compared with a control group to make sure it will match warehouse inventory perfectly. These quality standards were established so our customers have confidence in the consistent quality of our construction, color and finish.

Service:

We believe a product is only as good as the service that supports it. We spend a lot of time developing materials, processes and policies in order to make sure our customers are better served. The services we provide can be divided into three categories: supporting materials, order processing and customer service. Large strides have been made to ensure all of the pertinent information customers seek is readily available. Marketing materials are constantly being developed and distributed to help our customers educate their clientele. We understand that these are the sales tools required to successfully sell our product in your showrooms.

Our automated order processing system has allowed us to eliminate many unnecessary steps, significantly reducing our lead time. Orders placed online seamlessly flow through our inventory control and accounting systems.

We have a great team of experienced cabinet professionals ready to hear your concerns and answer your questions. Most importantly we listen to the input our customers give us and make sure your suggestions are addressed as we continually seek ways to better serve you. The goal is to establish a mutually beneficial relationship in which we can grow our businesses around.

Sample Doors

Capital Framed Collection - Highland Series

Shaker



White



Antique White



Dove



Grey



Cinder

York



Antique White

Torrance



White



Dove

Casselberry



Antique White



Saddle

Sample Doors
are available
to purchase
individually or
as a kit.

altaeuro Full-Access Frameless

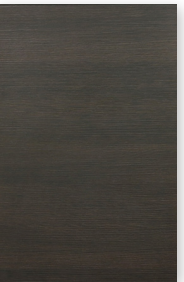
Torino



White Pine



Grey Wood



Dark Wood

Riviera

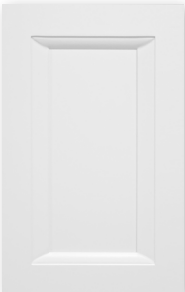


Oyster Shell



Conch Shell

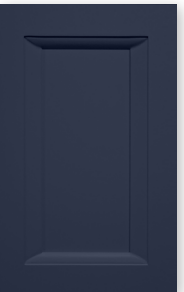
Verona - COMING 2021



Pure Blanc

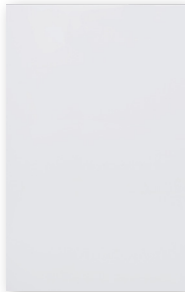


Storm Grey



Midnight Navy

Palermo



Gloss White

Marketing Tools



Highland Series Sales Sheet
(50 Pack)



altaeuro Sales Sheet (50 Pack)



Specification Manual



Framed Mini Base



Frameless Mini Base



Framed Merchandiser



Frameless Merchandiser

Dealer Policies

- As an authorized US Cabinet Depot dealer, it is your responsibility to communicate our policies, product information, order information, claim information, ect. to your customer.
 - **US Cabinet Depot will not provide any details to your customer at any time nor will we be held responsible for any inaccurate information provided by you or your associates.**
- All online resale of US Cabinet Depot products must be approved PRIOR to offering it for sale.
 - If online resale is approved by US Cabinet Depot, you are only allowed to resale on the website specified at the time of approval. Approval for resale on additional websites will need additional approval from US Cabinet Depot.
- Prior to publicizing your selling price, all dealers must adhere to the minimum advertised price as confirmed with your US Cabinet Depot representative.
- US Cabinet Depot will not accept shipping damage claims for warehouse pick up orders that are later shipped at dealer's discretion.

Order Processing & Payment

4

- All orders from US Cabinet Depot approved dealers will be accepted online only.
- **Full Payment is required before an order will be processed.** (This includes backorders and approved written add-ons).
- Payment can be made by Credit Card, Debit Card, or PayPal.
- Once an order is in process, no changes can be made. Additional items can be processed online as a new order.
- **Shipped Orders:**
 - Standard Advantage shipping is available for qualifying flat pack orders and will ship within 7 full business days.
 - Express Advantage shipping is available for all flat pack orders and will ship within 3 full business days.
 - Assembled orders are processed and shipped within 10 full business days.
- **Warehouse Pickup Orders:**
 - Flat pack warehouse pickup orders are processed and made available for pickup within 3 full business days.
 - Assembled warehouse pickup orders are processed and made available for pickup within 10 full business days.
- **RUSH ADVANTAGE ORDERS** will be processed for an additional fee for **flat pack orders ONLY.** (All orders with rush services are subject to total item quantity review.) The "Rush Fee" only applies to warehouse processing time and does not apply to transit time to your destination.

- Same day warehouse pickup is available for flat pack orders placed by 12:00 PM (local warehouse time) and require a minimum 3 hour processing time.
- Same day shipping is available for flat pack orders placed by 12:00 PM (local fulfilling warehouse time). Orders placed after 12:00 PM will be processed the following business day.
- Rush Advantage is unavailable for assembly orders and discontinued lines. Combined orders subject to refund of rush fee.
- Rush Advantage must be selected at the time of checkout.
- "Day One" starts on the **NEXT** full business day after the order is placed.
- Cancellations after the order is picked will be subject to a 10% processing fee.
- Cancellations made after an order is shipped are subject to a 20% restocking/processing fee.

Assembly & Modifications

- Assembly and limited modifications are available for warehouse pickup and freight shipped orders for additional labor and shipping fees as calculated by the website.
- A limited number of modifications are available **ON FRAMED ASSEMBLED ITEMS ONLY**, including:
 - Increased Depth
 - Decreased Depth
 - Prep for Glass: Route Door(s) & Finish Interior
 - Double Oven Conversion
- Modifications exempt the entire order from normal lead times.
- **Full payment must be received** prior to start of modifications.

5

Shipping & Delivery

- All LTL freight orders are packaged in individual boxes, placed on a pallet, shrink wrapped and strapped.
- All LTL freight shipping charges are calculated online at the time of checkout.
- US Cabinet Depot manages all shipping. 3rd party freight carriers **cannot** be sent by the dealer to pick up orders.

LTL Shipping

- There is a 2-5 business day standard transit time with LTL carriers. **Please account for at least one extra day for residential deliveries and deliveries requiring a scheduled delivery appointment.**
- **Shipping charges must be paid for when your order is placed online.** (Orders exceeding standard LTL sizes are subject to additional fees for Full Truckload shipping).
- You will receive a tracking number by email the day after the order has shipped.
- All destinations must be **tractor/trailer accessible**, or Limited Access fees will be applied (\$100).
- For residential deliveries and deliveries requiring appointments, the **freight company will contact you** 24 hours in advance to schedule the delivery (usually a 3-4 hour window).
- Shipping charges cover ONE delivery attempt. The customer is responsible for any additional shipping and handling charges for delivery failure due to customer circumstances.

LTL Delivery Policies

- The driver is only responsible for placing the pallet on the ground for deliveries that had lift gate services selected at the time of check out.
- Address classifications are based on city zoning, therefore it is possible to have a commercial property in a residential area. In this case the delivery would be considered residential, and subject to the residential delivery fees and conditions.
- A responsible party must be present to inspect, inventory, and sign off on delivery.
 - You **MUST** notate if the number of pallets delivered does not match the number listed on the driver's BOL copy.
 - Careful inspection of packaging conditions is vital to file freight claims. Any visible damages must be noted on the paperwork when signing for the delivery, as well as documented with photos. Even if you are not sure if the contents inside contain damages due to the exterior's condition, you **MUST** indicate on the BOL to be able to claim concealed damages in the future.
 - Do **NOT** reject damaged items. The delivery should be accepted, with documentation of the damage, and a claim should be filed online. SEE IMPORTANT NOTES IN MISSING AND DAMAGED ITEMS SECTION TO FOLLOW.
- Regional delivery services are available in select markets. Rates and delivery services vary by market.

Pick Up Orders

- Orders **MUST** be picked up within **5 business days** of receiving the ready for pickup notification.
- Orders not picked up within 5 business days are subject to a storage fee of \$25 per pallet per day.
- Orders not picked up within the allotted 10 business days will be **returned to stock, incurring the storage fee and a 10% restocking fee that will be deducted from the total refund** of the order.

Replacements for Missing or Damaged Items (Including Concealed Damage)

- US Cabinet Depot has final determination of resolution for any manufacturer warranty claims submitted. Solutions should be discussed with US Cabinet Depot prior to being promised to the end customer.
- Blemishes or other damages not impacting the structural integrity of a cabinet will not warrant a full cabinet replacement. US Cabinet Depot reserves the right to provide alternative products or components as solutions.
- Freight claims for obvious damage or shortage can only be accepted **when indicated on the bill of lading**.
- Freight damage claims must be filed within 5 business days. No claims will be allowed without the proper paperwork noting the damage at the time of delivery.
- To file a claim for a damage or a shortage, please log into our website and use our damage claim module.
- The following must be included to process the claim:
 - Order number
 - Buyer's name
 - Shipping address for replacements
 - Brief description of damage or shortage, including item numbers and/or parts
 - PICTURES of the damage are required
- Upon receipt of the damage claim, we will review the request within 48 business hours. Replacements will then be shipped out within 24-48 hours.
- Expedited shipping service is **NOT** available for replacements and/or parts.
- All damages must be documented and reported upon opening the boxes.
 - Missing items must be reported within **two weeks** from delivery.
 - Concealed damages must be reported within **one month** from delivery.
- Items that have been assembled and installed **cannot** be claimed as damaged.
- **US Cabinet Depot cannot be held responsible for any labor costs accrued during the installation of any of its products sold via any of its channels of distribution. This includes, but is not limited to, items that may be flawed or have become damaged in transit.**

Return Merchandise Authorizations (RMA)

- All returns must be authorized by US Cabinet Depot prior to return shipment.
- For authorization, please send an email request to support@uscabinetdepot.com.
- Returns must be received by US Cabinet Depot within 30 days of purchase.
- All items must be returned in original, unopened packaging, therefore **NO RETURNS ON ASSEMBLED CABINETS.**
- No returns on trims, mouldings, fillers, panels or sales tools.
- No returns on discontinued cabinet styles.
- QUALIFYING returns will incur a 20% RESTOCKING FEE.
- The customer is responsible for setting up and covering all return shipments.
- Any returned product DEEMED UNSELLABLE **WILL NOT RECEIVE CREDIT.**

Marketing Policies

- US Cabinet Depot cannot be held liable for applicable marketing costs for marketing our products.
- Private labeling is done at dealer's discretion.
- The use of any images and sales materials in your private label marketing can be released by emailing info@uscabinetdepot.com.

Display Policy

US Cabinet Depot is happy to partner with our displaying dealers. We now offer a 50% credit on US Cabinet Depot products that are ordered and installed in a dealer's showroom. Products can only be for display, not for functional use. Desks, bathrooms, breakrooms, etc. are not eligible for rebate. Each dealer can earn up to a total of \$2,500 in credits. The display items must be ordered online, paid in full, and pictures sent to info@uscabinetdepot.com of showroom installation before a credit can be released. Please note: Drop shipped items do not qualify for as part of the Display Program.

Third Party Design Programs

US Cabinet Depot does not guarantee the accuracy of any third party design software. This includes (but is not limited to) 2020 Design and ProKitchen Design softwares.

Please refer to your dealer portal for accurate information on US Cabinet Depot product specifications and pricing.

Construction

Are your cabinets constructed with solid wood?

Framed Capital Collection

- *Doors & Drawer Fronts* -
 - All stained doors, drawer fronts, and frames are constructed from 3/4" solid Birch hardwood. Our Casselberry Saddle style has a solid birch center panel, while our stained Shaker Cinder has a veneered MDF center panel.
 - Our painted styles feature an all HDF door: Shaker White, Shaker Grey, Shaker Dove, Shaker Antique White, Torrance White, Torrance Dove, Casselberry Antique White, and York Antique White.
- *Cabinet Box* - Our framed cabinet boxes are constructed from solid Birch hardwoods and furniture grade plywood. All materials are CARB2 compliant for standard US restrictions for formaldehyde emissions.
- *Drawer Box* - Our framed cabinetry features four-sided drawer boxes constructed from 5/8" thick solid hardwood, dovetail joints, and a fully captured 3/8" thick plywood floor.

altaeuro Full Access Frameless

- *Doors & Drawer Fronts* -
 - Our Torino and Riviera styles feature a fully edge banded, thermofused textured melamine over engineered wood, with a matching back.
 - Our Palermo style features a fully edge banded, high-gloss PET laminate over engineered wood, with a matte melamine back.
 - Our Verona style features a five-piece HDF painted door.
- *Cabinet Box* - Our frameless cabinet boxes are constructed using MDF and furniture grade plywood. All materials are CARB2 compliant for standard US restrictions for formaldehyde emissions.
- *Drawer Box* - Our frameless cabinetry comes standard with our altamax drawer box. The altamax drawer box is a four-piece construction box complete with 1/2" thick metal sides and 5/8" thick thermofused melamine engineered wood back and floor.

How is the interior of the cabinet finished?

Framed Capital Collection

- Our framed cabinetry comes standard with UV coated natural interiors. Glassdoor "GD" cabinets have interiors that are painted or stained to match the exterior.

altaeuro Full Access Frameless

- Our altaeuro cabinet boxes feature a grey linen thermofused melamine in and out.

Are your cabinets CARB2 certified?

Yes, all US Cabinet Depot products are 100% in compliance with CARB Phase 1 & CARB Phase 2 defined guidelines of composite wood products.

Are your cabinets strong enough to support a granite countertop?

Our plywood core construction for all of our cabinets ensures the strength required to support granite, concrete, or any other countertop material that you may select. No additional cabinet reinforcement is required.

Do your cabinets have soft-close doors and drawers?

Soft-close doors and drawers are standard on all of our current cabinet collections (excludes select discontinued styles).

Is a finished panel required for exposed cabinet ends?

Framed Capital Collection

- No, all of our framed cabinets come with finished exteriors.

altaeuro Full Access Frameless

- Yes, altaeuro features a standard grey linen thermofused melamine exterior, so panels will be needed to finish the exposed ends.

How much weight can the cabinet drawers hold?

Framed Capital Collection

- Our framed cabinet drawer boxes have a weight capacity of 70 lbs.

altaeuro Full Access Frameless

- Our altamax drawer boxes have the following weight capacities:
 - K-height (5") 88 lbs
 - C-height (6-¾") 132 lbs.

Do you sell paint color or stains that match the finishes of the cabinetry you offer?

We do not carry the paint color or stains to sell direct but we have partnered with Sherwin Williams for easy access to purchase our finishes. Simply visit a Sherwin Williams in your area, let them know you are interested in a custom paint color or stain from their National Accounts database under the name 'BGI'. Once the store associate has accessed the account successfully, provide them with the paint color/stain you are looking for: **Casselberry Antique White:** BGI-CW, **Casselberry Saddle:** BGI-CS, **Torrance White:** BGI-TW, **Torrance Dove:** BGI-TD, **York Antique White:** BGI-YW, **Shaker White:** BGI-SW, **Shaker Antique White:** BGI-SA, **Shaker Dove:** BGI-SD, **Shaker Grey:** BGI-SG, **Shaker Cinder:** BGI-SC, **Verona Pure Blanc:** BGI-VPB, **Verona Storm Grey:** BGI-VSG, Verona **Midnight Blue:** BGI-VMB

Retail locations can accomplish matching any paint color for your projects however, paint color/stains are only recommended for smaller items such as trims & mouldings. For an accurate match for larger items, you will need to contact a Sherwin Williams Professional Coatings Group.

Ordering

What forms of payment do you accept?

We accept all major credit cards (Visa, American Express, MasterCard, and Discover), debit card & PayPal.

How can I check the status of my order?

You can view the progress of your orders by logging onto your account and selecting 'My Order' under the 'My Account' dropdown menu. The order status will be displayed next to your order as well as any tracking information if the order has shipped.

Do you offer credit terms?

We currently do not offer any sort of credit terms to our customers. All orders must be paid in full prior to processing and shipping any orders.

What is your return policy?

We do accept returns in certain circumstances. Please see the 'Return Merchandise Authorizations (RMA)' section of our Terms & Conditions for details.

Delivery

How do you ship your cabinetry?

Most orders will be shipped on a pallet via an LTL (Less than Truckload) carrier. Some smaller items may ship through a small parcel carrier.

How long will it take to receive my cabinets?

Flatpack Orders

- Flatpack orders are processed and shipped out of our facilities within 7 full business days depending on the service chosen during checkout. Transit time to your location can vary from 1-6 business days depending on your location and the services required at delivery. (Backorders are exempt from normal lead times.)

Assembled Orders

- Standard assembled orders are processed and shipped within 10 full business days. Transit time to your location can vary from 1-6 business days depending on your location and the services required at delivery. (Backorders and modification orders are exempt from normal lead times.)

What if my delivery includes damaged cabinets?

If your order is received damaged, please notate any damages with the freight company on the delivery receipt when accepting the delivery and take photos of the damaged items. Most importantly, do not refuse the shipment. Submit a claim online with the photos of the damages or send them immediately to support@uscabinetdepot.com. US Cabinet Depot will review and replace damaged pieces in a timely manner.

Limited Lifetime Warranty

Brothers Global Inc warrants to the original consumer purchaser that US Cabinet Depot cabinetry, door hinges, and drawer glides will be free from defects in material and workmanship under normal use and service for the lifetime of the product (Proof of Purchase is required). This warranty is not transferable and only applicable to product used for residential purposes. Representatives of US Cabinet Depot do not have the authority to change or enlarge this warranty.

This warranty does not cover normal wear and tear, damage or defects caused by accidents, misuse, abuse, or lack of necessary maintenance; nor does it cover alteration, modification, improper installation, improper handling / storage, environmental conditions, nor any labor expenses.

Brothers Global Inc., at our option, may elect to repair or replace with a functionally equivalent product any US Cabinet Depot product covered by this warranty. Some replacement parts are subject to availability and may differ from original parts received. Return of defective product may be required for a replacement to be issued. Repair parts or replacement parts are at the expense of Brothers Global Inc., but customer shall bear all other expenses. These expenses may include, but are not limited to, cost of removal and re-installation of product, labor expenses, etc.

Just as no two trees are alike, no two pieces of wood are alike. The variation in color and grain pattern in wood adds to its natural beauty and is not considered an imperfection. Environmental factors, including but not limited to artificial / natural light, moisture, cleaners, smoke, etc, may cause the darkening or mellowing of a cabinet over time. This is a natural process and can be expected. This warranty does not cover the natural aging or darkening / mellowing of wood color, the inherent growth characteristics of, or variation in wood.

Some of the cabinet lines feature a glazed finish which accentuates the door and drawer front profiles. This glaze is hand applied over a stain or paint and may, due to the nature of application, consist of random drips, runs, etc. As glazing is a hand applied process, there will be variations in color and appearance from door to door and cabinet to cabinet. This is not considered a defect and is considered normal with hand applied finishes. It is the nature of wood to expand and contract to varying degrees depending on climate conditions. As a result, cabinet lines with painted surfaces may show fractures in the paint at joints. This is normal and is not considered a defect.

This warranty is valid only in the United States of America and Canada and is not transferable. All implied warranties are limited in duration to the shorter of the period provided by law or the period of this warranty. To the extent permitted by law, this warranty excludes special, incidental, or consequential damages. Some states do not allow the exclusion or limitations of incidental or consequential damages or limitations on how long an implied warranty lasts, so the above limitations or exclusions may not apply to you. This warranty gives you specific legal rights; you may have other rights which vary from state to state. To exercise this warranty, please contact the US Cabinet Depot supplier from whom you purchased the product. Report, in writing, to support@uscabinetdepot.com all defects claimed and include proof of purchase documentation.

SHAKER

(*Specifications subject to change without notice)



**WHITE
(SW)**



**ANTIQUE WHITE
(SA)**



**DOVE
(SD)**

- Framed Cabinet with Full Overlay Doors and Drawers
- Under Mount Full Extension Soft Close Drawer Glides
- Concealed European Style Hinges with Soft Close Feature
- Five Piece HDF Door
- ½" Plywood Box with UV Coated Matching Exterior
- Glue & Staple or Metal Clip Assembly
- UV Coated Natural Interior

SHAKER

(*Specifications subject to change without notice)



GREY
(SG)



CINDER
(SC)

- Framed Cabinet with Full Overlay Doors and Drawers
- Under Mount Full Extension Soft Close Drawer Glides
- Concealed European Style Hinges with Soft Close Feature
- Five Piece HDF Door
- ½" Plywood Box with UV Coated Matching Exterior
- Glue & Staple or Metal Clip Assembly
- UV Coated Natural Interior

- Framed Cabinet with Full Overlay Doors and Drawers
- Under Mount Full Extension Soft Close Drawer Glides
- Concealed European Style Hinges with Soft Close Feature
- Solid Birch Door Frame with Veneered MDF Center Panel
- ½" Plywood Box with Stained Exterior
- Glue & Staple or Metal Clip Assembly
- UV Coated Natural Interior

YORK

(*Specifications subject to change without notice)



ANTIQUE WHITE (YW)

- Framed Cabinet with Full Overlay Doors and Drawers
- Under Mount Full Extension Soft Close Drawer Glides
- Concealed European Style Hinges with Soft Close Feature
- Five Piece HDF Door
- ½" Plywood Box with UV Coated Matching Exterior
- Glue & Staple or Metal Clip Assembly
- UV Coated Natural Interior

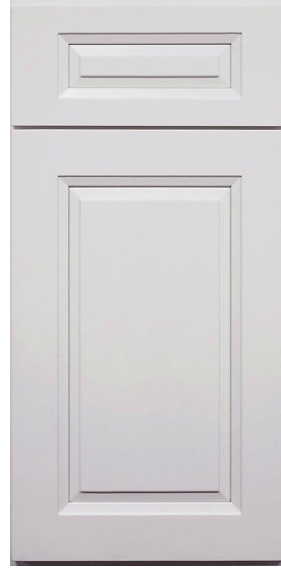
15

TORRANCE

(*Specifications subject to change without notice)



WHITE
(TW)



DOVE
(TD)

- Framed Cabinet with Full Overlay Doors and Drawers
- Under Mount Full Extension Soft Close Drawer Glides
- Concealed European Style Hinges with Soft Close Feature
- Five Piece HDF Door
- ½" Plywood Box with UV Coated Matching Exterior
- Glue & Staple or Metal Clip Assembly
- UV Coated Natural Interior

CASSELBERRY

(*Specifications subject to change without notice)



**ANTIQUE WHITE
(CW)**

- Framed Cabinet with Full Overlay Doors and Drawers
- Under Mount Full Extension Soft Close Drawer Glides
- Concealed European Style Hinges with Soft Close Feature
- Five Piece HDF Door
- ½" Plywood Box with UV Coated Matching Exterior
- Glue & Staple or Metal Clip Assembly
- UV Coated Natural Interior

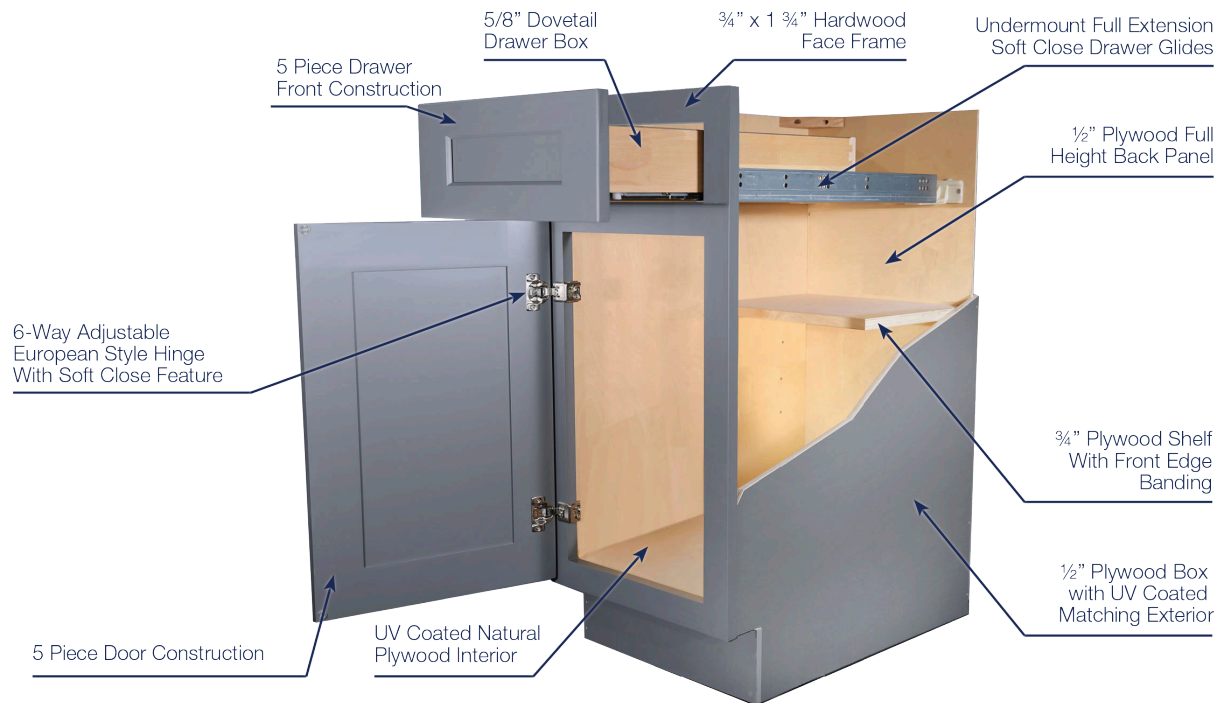


**SADDLE
(CS)**

- Framed Cabinet with Full Overlay Doors and Drawers
- Under Mount Full Extension Soft Close Drawer Glides
- Concealed European Style Hinges with Soft Close Feature
- Solid Birch Door Frame with Solid Birch Center Panel
- ½" Plywood Box with UV Coated Matching Exterior
- Glue & Staple or Metal Clip Assembly
- UV Coated Natural Interior

CONSTRUCTION SPECIFICATIONS

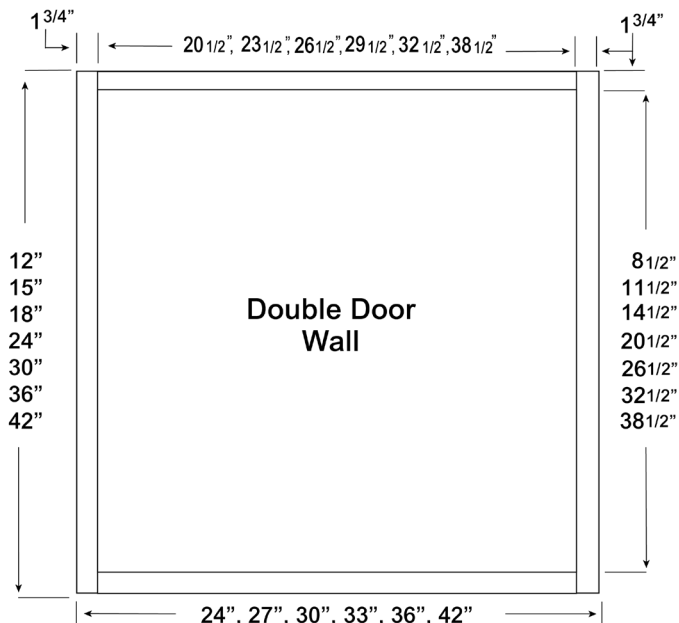
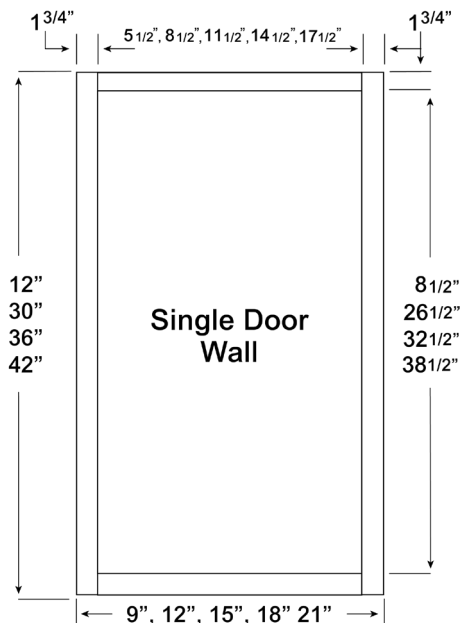
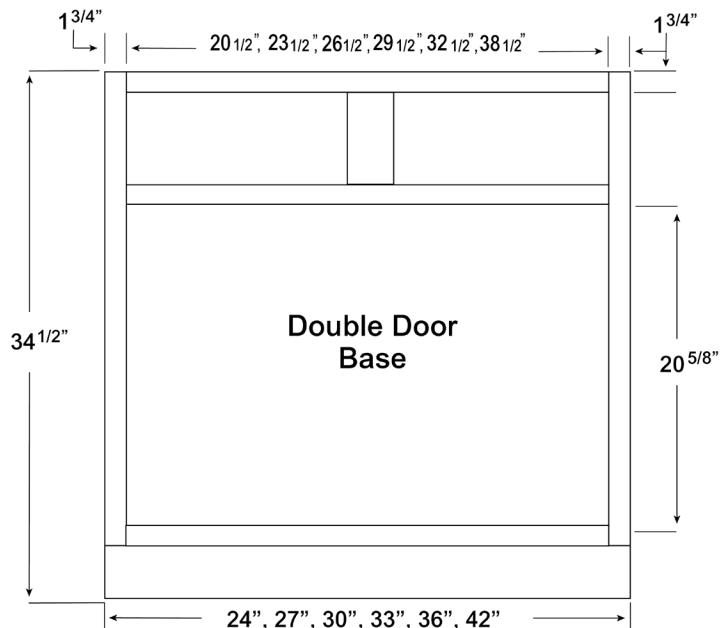
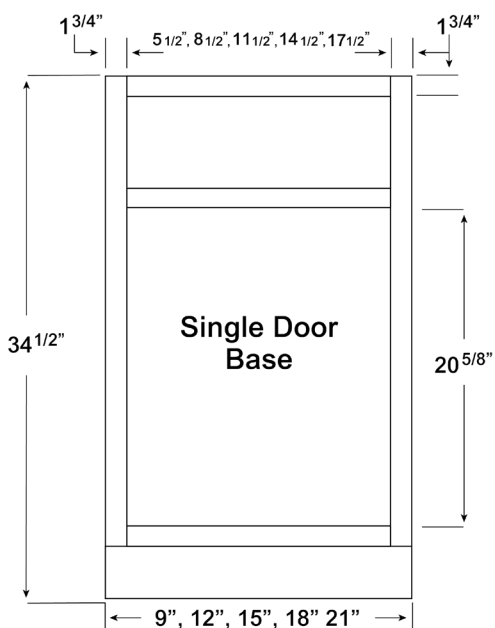
(*Specifications subject to change without notice)



CONSTRUCTION SPECIFICATIONS

CABINET FRAME & OPENING DIMENSIONS - 1 3/4"

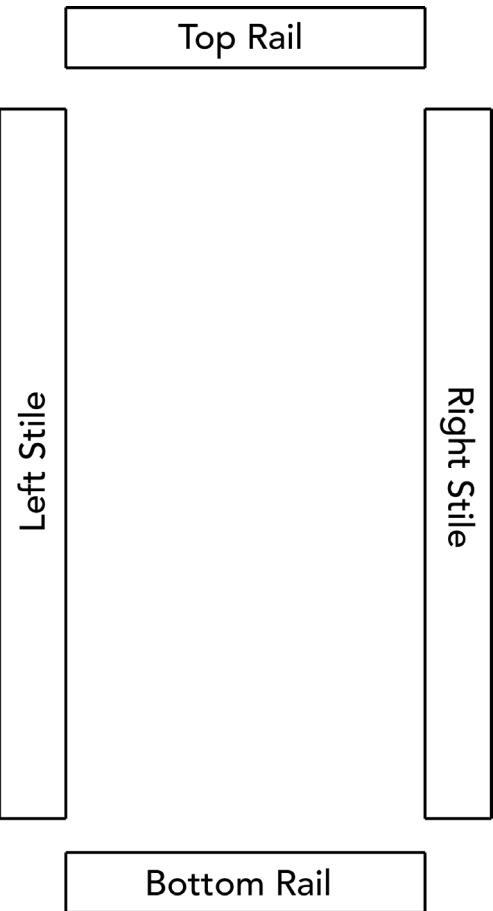
- Height of all base cabinet openings is 20 5/8"
- Cabinet Size - 3 1/2" will give you opening
- Example B30: 30" - 3 1/2" = 26 1/2"



GLASSDOOR CUTOUT SPECIFICATIONS

We offer various sized framed wall cabinets that have the doors routed for glass inserts and have an interior matching the cabinet exterior.

While these cabinets do not come equipped with glass or mullions, we have developed an easy to follow formula to help **estimate** the proper sized insert for your door while placing orders.



Height Configuration:
Door Height* - (2 x Door Style Rail Width) + 1½"

Width Configuration:
Door Width* - (2 x Door Style Stile Width) + 1½"

Door Style	Rail Width	Stile Width
Shaker	2¾"	2¾"
York	3"	3"
Torrance	3"	3"
Casselberry	3"	3"

*Door height and width information is located in the Specification Manual.

DISCLAIMER: This formula is to be used as an estimation tool only. We recommend that physical measurements are taken prior to ordering your inserts. We cannot guarantee the exact dimensions determined when using the formula provided.

MODIFICATION AVAILABILITY

We offer a limited number of modifications on select assembled framed cabinets including reduced/increased depth, prep/route for glass, & double oven conversion. Modifications are available on select cabinets only. Labor and assembly fees are calculated on the website on a per item basis.

Mod Option/Code	Application	Description/Limitations
Reduced Depth (RD)	Base Cabinets	Reduced depth of select base cabinets in 3" increments ranging from 21" to 12". Includes: Full Height Door Bases, Door/Drawer Bases, Drawer Bases, Sink Bases Excludes: Corner Base Cabinets, Base Accessory Cabinet Kits, Specialty Base Cabinets
	Wall Cabinets	Reduced depth of select wall cabinets in 3" increments. • 12"D Cabinets - Range from 9" to 6" • 24"D Cabinets - Range from 21" to 15" ** **33"W Refrigerator Cabinets can be decreased from 21" to 12" Includes: 30, 36, & 42"H Wall Cabinets, Bridge Wall Cabinets, Refrigerator Wall Cabinets, 12, 30, 36, 42"H Routed for Glass with Finished Interior Wall Cabinets Excludes: Corner Wall Cabinets, Corner Routed for Glass with Finished Interior Wall Cabinets, Specialty Wall Cabinets
	Tall Cabinets	Reduced depth of select tall cabinets in 3" increments ranging from 21" to 12". Includes: Utility Cabinets Excludes: Oven Cabinets & Utility Accessory Cabinet Kits
	Vanity Cabinets	Reduced depth of select vanity cabinets in 3" increments ranging from 18" to 15". Includes: Vanity Combo Bases, Vanity Sink Bases Excludes: Vanity Drawer Bases
Increased Depth (ID)	Base Cabinets	Unavailable
	Wall Cabinets	Increased depth of select wall cabinets in 3" increments ranging from 15" to 24". Includes: 30, 36, & 42"H Wall Cabinets & Routed for Glass with Finished Interior Wall Cabinets Excludes: Corner Cabinets, Bridge Wall Cabinets, Refrigerator Wall Cabinets, Corner Routed for Glass with Finished Interior Wall Cabinets, Specialty Wall Cabinets
	Tall Cabinets	Increased depth of select tall cabinets to a maximum of 27". Includes: Utility Cabinets Excludes: Oven Cabinets & Utility Accessory Cabinet Kits Unavailable
	Vanity Cabinets	Increase depth on Vanity Sink Base cabinets from 21" to 24". Includes: Vanity Sink Base Cabinets Excludes: Vanity Drawer Base Cabinets, Vanity Combo Bases
Route for Glass (GD) and Finish Interior	Base Cabinets	Unavailable
	Wall Cabinets	For select wall cabinets we will route the door for glass and finish the interior to match the exterior of the cabinet. Glass is not included. Includes: 30, 36, & 42"H Wall Cabinets (unless specified otherwise), 15, 18, & 24"H Bridge Wall Cabinets, Refrigerator Wall Cabinets Excludes: W0930/36/42, W1530/36/42, W2430/36/42, W3030/36, 12"H Bridge Cabinets
	Tall Cabinets	Unavailable
	Vanity Cabinets	Unavailable
Double Oven Conversion	Tall Cabinets	Modification from a single oven cabinet to a double oven cabinet by removal of top two drawers. Includes: O338424, O339024, & O339624 oven cabinets Additional in-field cutting may be required to fit oven. Max oven dimensions are 31½"W x 40"H

DISCLAIMER: Modifications are only available on assembled cabinets. Modifications exclude orders from the standard lead time. Modifications are not available for discontinued styles or items.

		Price Level 1	Price Level 2	Price Level 3
Cabinet	Weight	Shaker White	Shaker Antique White Shaker Dove Shaker Grey	Shaker Cinder Casseleberry Torrance York
Full Height Single Door Bases				
BT9	38	\$374	\$394	\$414
B12FH	46	\$725	\$763	\$801
B15FH	52	\$816	\$858	\$900
B18FH	57	\$904	\$950	\$998
B21FH	60	\$991	\$1,042	\$1,094
Full Height Double Door Bases				
B24FH	66	\$1,117	\$1,174	\$1,233
B27FH	72	\$1,225	\$1,288	\$1,352
B30FH	82	\$1,392	\$1,465	\$1,538
B33FH	87	\$1,487	\$1,564	\$1,643
B36FH	102	\$1,589	\$1,671	\$1,755
Single Door Single Drawer Bases				
B12	51	\$521	\$549	\$576
B15	57	\$576	\$607	\$636
B18	62	\$629	\$662	\$695
B21	66	\$680	\$716	\$752
Double Door Single Drawer Bases				
B24	72	\$748	\$786	\$826
B27	78	\$820	\$863	\$906
Double Door Double Drawer Bases				
B30	89	\$952	\$1,003	\$1,053
B33	94	\$1,011	\$1,065	\$1,118
B36	100	\$1,078	\$1,135	\$1,192
B42	109	\$1,143	\$1,203	\$1,264
Sink Bases				
SB30	70	\$788	\$830	\$870
SB33	72	\$799	\$841	\$883
SB36	76	\$810	\$853	\$895
FSB36	76	\$810	\$853	\$895
DCSF36	15	\$250	\$264	\$276
DCSF42	29	\$338	\$356	\$374
SBF3636	19	\$127	\$134	\$141
SBF4242	23	\$153	\$162	\$170
Two Drawer Bases				
2DB18	72	\$895	\$942	\$988
2DB24	81	\$1,007	\$1,061	\$1,113
2DB30	94	\$1,137	\$1,197	\$1,257
2DB36	105	\$1,293	\$1,361	\$1,429

		Price Level 1	Price Level 2	Price Level 3
Cabinet	Weight	Shaker White	Shaker Antique White Shaker Dove Shaker Grey	Shaker Cinder Casseleberry Torrance York
Three Drawer Bases				
3DB12	75	\$765	\$806	\$846
3DB15	82	\$840	\$885	\$929
3DB18	89	\$898	\$945	\$992
3DB21	95	\$952	\$1,003	\$1,053
3DB24	102	\$1,009	\$1,063	\$1,116
3DB30	117	\$1,139	\$1,199	\$1,259
3DB36	132	\$1,295	\$1,363	\$1,431
Base Corner Cabinets				
BER33	89	\$888	\$936	\$983
BER36	99	\$982	\$1,034	\$1,086
LSB33	89	\$1,285	\$1,332	\$1,380
LSB36	99	\$1,379	\$1,431	\$1,483
BBC36	70	\$702	\$739	\$776
BBC42	87	\$857	\$902	\$947
Pullout Organizer Shelf Base Kit				
BT9PO	60	\$1,247	\$1,267	\$1,287
Trash Can Pullout Base Kits				
B15TCPO	80	\$1,526	\$1,557	\$1,586
B18TCPO	87	\$1,611	\$1,644	\$1,677
B21TCPO	94	\$1,680	\$1,716	\$1,752
B15FHTCPO	82	\$1,766	\$1,808	\$1,850
B18FHTCPO	90	\$1,886	\$1,932	\$1,980
B21FHTCPO	98	\$1,991	\$2,042	\$2,094
Tray Divider Base Kits				
B12TD	48	\$666	\$694	\$721
B15TD	53	\$727	\$757	\$786
B18TD	58	\$843	\$876	\$909
B12FHTD	63	\$858	\$897	\$935
B15FHTD	71	\$955	\$998	\$1,040
B18FHTD	85	\$1,103	\$1,149	\$1,197

		Price Level 1	Price Level 2	Price Level 3
Cabinet	Weight	Shaker White	Shaker Antique White Shaker Dove Shaker Grey	Shaker Cinder Casseleberry Torrance York
Single Rollout Shelf Base Kits				
B181RS	58	\$780	\$813	\$846
B211RS	62	\$843	\$879	\$915
B241RS	68	\$923	\$962	\$1,002
B271RS	73	\$1,006	\$1,049	\$1,092
B301RS	84	\$1,149	\$1,199	\$1,250
B331RS	89	\$1,218	\$1,272	\$1,325
B361RS	94	\$1,296	\$1,352	\$1,409
B18FH1RS	68	\$1,055	\$1,101	\$1,149
B21FH1RS	73	\$1,153	\$1,205	\$1,257
B24FH1RS	80	\$1,292	\$1,350	\$1,408
B27FH1RS	87	\$1,411	\$1,474	\$1,538
B30FH1RS	98	\$1,589	\$1,661	\$1,735
B33FH1RS	104	\$1,694	\$1,771	\$1,849
B36FH1RS	120	\$1,806	\$1,889	\$1,972
Double Rollout Shelf Base Kits				
B182RS	84	\$931	\$964	\$998
B212RS	90	\$1,006	\$1,042	\$1,077
B242RS	100	\$1,098	\$1,137	\$1,177
B272RS	108	\$1,192	\$1,235	\$1,278
B302RS	121	\$1,345	\$1,395	\$1,446
B332RS	128	\$1,425	\$1,478	\$1,532
B362RS	136	\$1,513	\$1,570	\$1,626
B18FH2RS	79	\$1,206	\$1,252	\$1,300
B21FH2RS	84	\$1,316	\$1,367	\$1,419
B24FH2RS	94	\$1,468	\$1,525	\$1,583
B27FH2RS	102	\$1,596	\$1,660	\$1,724
B30FH2RS	114	\$1,785	\$1,857	\$1,931
B33FH2RS	121	\$1,900	\$1,978	\$2,056
B36FH2RS	138	\$2,024	\$2,106	\$2,190

		Price Level 1	Price Level 2	Price Level 3
Cabinet	Weight	Shaker White	Shaker Antique White Shaker Dove Shaker Grey	Shaker Cinder Casseleberry Torrance York
Triple Rollout Shelf Base Kits				
B18FH3RS	90	\$1,357	\$1,403	\$1,452
B21FH3RS	96	\$1,479	\$1,530	\$1,582
B24FH3RS	108	\$1,643	\$1,700	\$1,759
B27FH3RS	117	\$1,782	\$1,845	\$1,910
B30FH3RS	130	\$1,981	\$2,054	\$2,127
B33FH3RS	138	\$2,107	\$2,185	\$2,263
B36FH3RS	156	\$2,241	\$2,323	\$2,407
Accessory Base Cabinets				
BMW30	80	\$810	\$853	\$895
DFB18	68	\$706	\$742	\$780
Single Door Wall Cabinets - 30"H				
W0930	28	\$289	\$303	\$319
W1230	31	\$318	\$335	\$352
W1530	36	\$372	\$392	\$412
W1830	41	\$422	\$445	\$467
W2130	45	\$471	\$497	\$522
Double Door Wall Cabinets - 30"H				
W2430	52	\$538	\$566	\$594
W2730	56	\$594	\$626	\$657
W3030	60	\$639	\$673	\$707
W3330	65	\$694	\$731	\$768
W3630	69	\$738	\$777	\$816
Single Door Wall Cabinets - 36"H				
W0936	32	\$314	\$331	\$347
W1236	36	\$362	\$381	\$400
W1536	41	\$419	\$441	\$463
W1836	46	\$471	\$497	\$522
W2136	51	\$547	\$576	\$605
Double Door Wall Cabinets - 36"H				
W2436	59	\$631	\$665	\$697
W2736	64	\$686	\$722	\$758
W3036	68	\$739	\$778	\$817
W3336	73	\$796	\$838	\$879
W3636	78	\$847	\$891	\$937

		Price Level 1	Price Level 2	Price Level 3
Cabinet	Weight	Shaker White	Shaker Antique White Shaker Dove Shaker Grey	Shaker Cinder Casseleberry Torrance York
Single Door Wall Cabinets - 42"H				
W0942	37	\$363	\$382	\$401
W1242	41	\$413	\$435	\$456
W1542	48	\$488	\$515	\$540
W1842	54	\$555	\$585	\$613
W2142	60	\$609	\$642	\$673
Double Door Wall Cabinets - 42"H				
W2442	68	\$733	\$772	\$811
W2742	74	\$784	\$826	\$867
W3042	80	\$844	\$888	\$932
W3342	85	\$906	\$954	\$1,002
W3642	91	\$977	\$1,028	\$1,079
Wall Corner Cabinets				
WER2430	66	\$756	\$796	\$836
WER2436	71	\$849	\$894	\$939
WER2442	83	\$990	\$1,042	\$1,094
DCW2430	70	\$694	\$731	\$768
DCW2436	77	\$784	\$826	\$867
DCW2442	92	\$905	\$953	\$1,001
WBC2730	53	\$516	\$543	\$570
WBC2736	59	\$581	\$611	\$642
WBC2742	69	\$676	\$712	\$747
Wall Bridge Cabinets- 12" H				
W3012	30	\$361	\$380	\$399
W3612	34	\$397	\$418	\$439
Wall Bridge Cabinets- 15" H				
W3015	34	\$403	\$424	\$445
W3615	38	\$428	\$450	\$473
Wall Bridge Cabinets- 18" H				
W3018	38	\$439	\$462	\$485
W3618	43	\$479	\$504	\$529
Wall Bridge Cabinets- 24" H				
W3024	49	\$525	\$552	\$580
W3624	56	\$617	\$650	\$683

		Price Level 1	Price Level 2	Price Level 3
Cabinet	Weight	Shaker White	Shaker Antique White Shaker Dove Shaker Grey	Shaker Cinder Casseleberry Torrance York
Wall Refrigerator Cabinets- 12" H (24" Deep)				
W301224	30	\$485	\$510	\$537
W331224	34	\$501	\$527	\$553
W361224	48	\$508	\$534	\$562
Wall Refrigerator Cabinets- 15" H (24" Deep)				
W301524	33	\$508	\$534	\$562
W331524	37	\$532	\$561	\$588
W361524	51	\$537	\$565	\$593
Wall Refrigerator Cabinets- 18" H (24" Deep)				
W301824	37	\$544	\$573	\$602
W331824	41	\$572	\$603	\$633
W361824	53	\$576	\$607	\$636
Wall Refrigerator Cabinets- 24" H (24" Deep)				
W302424	53	\$712	\$750	\$788
W332424	56	\$741	\$781	\$820
W362424	73	\$750	\$789	\$828
Single Door Wall Cabinets - Routed for Glass (with Finished Interior)				
W1530GD	36	\$393	\$414	\$434
W1536GD	41	\$442	\$465	\$488
W1542GD	47	\$516	\$543	\$570
Double Door Wall Cabinets - Routed for Glass (with Finished Interior)				
W2430GD	51	\$567	\$597	\$627
W2436GD	59	\$657	\$692	\$727
W2442GD	60	\$754	\$794	\$833
W3030GD	56	\$658	\$693	\$728
W3036GD	63	\$757	\$797	\$837
W3042GD	75	\$867	\$912	\$958
Wall Corner Cabinets - Routed for Glass (with Finished Interior)				
DCW2430GD	70	\$725	\$762	\$800
DCW2436GD	77	\$818	\$861	\$903
DCW2442GD	92	\$944	\$993	\$1,043

		Price Level 1	Price Level 2	Price Level 3
Cabinet	Weight	Shaker White	Shaker Antique White Shaker Dove Shaker Grey	Shaker Cinder Casseleberry Torrance York
Wall Stacker Cabinets - 12"H - Routed for Glass (with Finished Interior)				
W1212GD	11	\$187	\$196	\$206
W1512GD	12	\$219	\$231	\$243
W1812GD	14	\$244	\$256	\$269
W2112GD	15	\$276	\$291	\$306
W2412GD	18	\$316	\$333	\$350
W2712GD	20	\$360	\$379	\$398
W3012GD	20	\$379	\$399	\$418
W3312GD	22	\$398	\$419	\$440
W3612GD	24	\$418	\$440	\$462
DCW2412GD	24	\$478	\$503	\$527
Wall Accessory Cabinets				
W3D18	32	\$617	\$650	\$683
W3D24	40	\$759	\$799	\$839
WOC3018	33	\$289	\$289	\$289
WMSSHELF	11	\$170	\$170	\$170
WXRSHelf	11	\$98	\$98	\$98
WRC2430	40	\$526	\$553	\$581
WRC3018	33	\$475	\$500	\$525
WWC630	83	\$279	\$295	\$310
Utility Cabinets - Two Doors				
U188424	136	\$1,478	\$1,556	\$1,634
U189024	143	\$1,529	\$1,609	\$1,689
U189624	150	\$1,600	\$1,684	\$1,768
Utility Cabinets - Four Doors				
U248424	165	\$1,746	\$1,838	\$1,930
U249024	172	\$1,815	\$1,912	\$2,008
U249624	180	\$1,906	\$2,007	\$2,106
U309024	169	\$1,946	\$2,048	\$2,150
U309624	186	\$2,045	\$2,153	\$2,261
Oven Cabinets				
O338424	215	\$2,157	\$2,271	\$2,385
O339024	233	\$2,373	\$2,498	\$2,623
O339624	242	\$2,546	\$2,681	\$2,815

		Price Level 1	Price Level 2	Price Level 3
Cabinet	Weight	Shaker White	Shaker Antique White Shaker Dove Shaker Grey	Shaker Cinder Casseleberry Torrance York
Four Rollout Shelf Utility Cabinet Kits				
U1884244RS	132	\$2,083	\$2,161	\$2,239
U1890244RS	138	\$2,134	\$2,213	\$2,294
U1896244RS	145	\$2,205	\$2,289	\$2,373
U2484244RS	161	\$2,448	\$2,539	\$2,631
U2490244RS	169	\$2,517	\$2,613	\$2,709
U2496244RS	176	\$2,607	\$2,708	\$2,808
U3090244RS	210	\$2,731	\$2,833	\$2,936
U3096244RS	250	\$2,831	\$2,938	\$3,046
Vanity Sink Cabinets				
VS24	56	\$591	\$623	\$654
VS27	60	\$636	\$670	\$704
VS30	64	\$688	\$725	\$760
VS36	73	\$782	\$823	\$865
Vanity Drawer Base Cabinets				
3VDB12	68	\$747	\$785	\$824
3VDB15	74	\$800	\$842	\$884
3VDB18	80	\$853	\$898	\$942
Vanity Combination Cabinets				
V3021DL	96	\$999	\$1,051	\$1,104
V3021DR	96	\$999	\$1,051	\$1,104
V3621DL	106	\$1,106	\$1,164	\$1,222
V3621DR	106	\$1,106	\$1,164	\$1,222
VSD36	85	\$986	\$1,038	\$1,090
VSD42	95	\$1,093	\$1,151	\$1,208
VSD48	104	\$1,200	\$1,263	\$1,327
VDDDB42	80	\$1,712	\$1,802	\$1,892
VDDDB48	82	\$1,764	\$1,857	\$1,950

		Price Level 1	Price Level 2	Price Level 3
Cabinet	Weight	Shaker White	Shaker Antique White Shaker Dove Shaker Grey	Shaker Cinder Casselberry Torrance York
Moldings				
ACM8* Shaker & Torrance ONLY	1	\$152	\$152	\$152
LACM8	4	\$196	\$196	\$196
COV* Excludes Casselberry	10	\$277	\$277	\$277
CM8* Casselberry & York ONLY	4	X	X	\$139
DCM	7	\$208	\$208	\$208
ICM* Casselberry & York ONLY	8	X	X	\$278
ROPE* Casselberry & York ONLY	1	X	X	\$50
ALRM* Shaker & Torrance ONLY	1	\$244	\$244	\$244
LRM	5	\$214	\$214	\$214
OCM	2	\$92	\$92	\$92
BAM	1	\$42	\$42	\$42
SCR	1	\$42	\$42	\$42
SHM	1	\$69	\$69	\$69
TKC	2	\$53	\$53	\$53
FBM	11	\$200	\$200	\$200
TAM12	6	\$60	\$60	\$60
TAM15	6	\$67	\$67	\$67
TAM18	6	\$72	\$72	\$72
TAM21	7	\$79	\$79	\$79
TAM24	7	\$84	\$84	\$84
TAM30	8	\$96	\$96	\$96
TAM36	8	\$108	\$108	\$108
TAM42	9	\$120	\$120	\$120
TAM48	9	\$147	\$147	\$147
TAM60	9	\$172	\$172	\$172
TAM96	10	\$267	\$267	\$267
TAA12	7	\$81	\$81	\$81
TAA15	7	\$87	\$87	\$87
TAA18	7	\$92	\$92	\$92
TAA21	8	\$99	\$99	\$99
TAA24	8	\$104	\$104	\$104
TAA30	9	\$118	\$118	\$118
TAA36	10	\$128	\$128	\$128
TAA42	10	\$141	\$141	\$141
TAA48	11	\$169	\$169	\$169

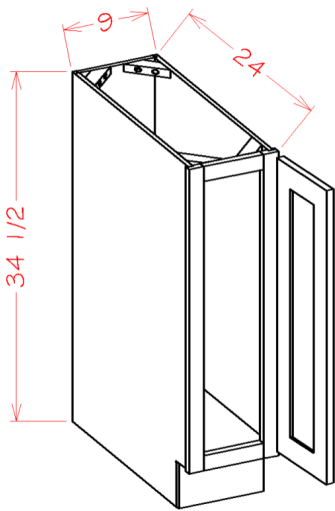
		Price Level 1	Price Level 2	Price Level 3
Cabinet	Weight	Shaker White	Shaker Antique White Shaker Dove Shaker Grey	Shaker Cinder Casseleberry Torrance York
Moldings (cont.)				
TAM60	9	\$172	\$172	\$172
TAM96	10	\$267	\$267	\$267
TAA12	7	\$81	\$81	\$81
TAA15	7	\$87	\$87	\$87
TAA18	7	\$92	\$92	\$92
TAA21	8	\$99	\$99	\$99
TAA24	8	\$104	\$104	\$104
TAA30	9	\$118	\$118	\$118
TAA36	10	\$128	\$128	\$128
TAA42	10	\$141	\$141	\$141
TAA48	11	\$169	\$169	\$169
TAA60	11	\$194	\$194	\$194
TAS12	5	\$54	\$54	\$54
TAS15	6	\$58	\$58	\$58
TAS18	6	\$62	\$62	\$62
TAS21	6	\$66	\$66	\$66
TAS24	6	\$70	\$70	\$70
TAS30	7	\$79	\$79	\$79
TAS36	8	\$106	\$106	\$106
TAS42	8	\$118	\$118	\$118
TAS48	8	\$140	\$140	\$140
TAS60	9	\$151	\$151	\$151
TAS96	9	\$194	\$194	\$194
Fillers & Panels				
F342	3	\$46	\$46	\$46
F396	6	\$142	\$142	\$142
FF396	7	\$156	\$156	\$156
F642	6	\$90	\$90	\$90
F696	12	\$227	\$227	\$227
FOL630	3	\$53	\$55	\$58
FOL636	5	\$63	\$66	\$69
FOL642	6	\$75	\$78	\$82
BFOL634	5	\$63	\$66	\$69
BSV	4	\$69	\$69	\$69
DWR3	16	\$162	\$162	\$162

		Price Level 1	Price Level 2	Price Level 3
Cabinet	Weight	Shaker White	Shaker Antique White Shaker Dove Shaker Grey	Shaker Cinder Casseleberry Torrance York
Fillers & Panels (cont.)				
BDEP	18	\$239	\$252	\$265
WSV42	3	\$38	\$38	\$38
WDEP1212	9	\$117	\$123	\$128
WDEP1218	9	\$117	\$123	\$128
WDEP30	10	\$117	\$123	\$128
WDEP36	12	\$135	\$142	\$149
WDEP42	14	\$152	\$161	\$169
USV2496	10	\$129	\$129	\$129
FPV4296	47	\$257	\$257	\$257
BBFPV4296	47	\$494	\$494	\$494
S2496	37	\$281	\$281	\$281
REPV3096	37	\$415	\$415	\$415
TDEP2484	30	\$680	\$716	\$752
TDEP2490	30	\$733	\$772	\$811
TDEP2496	30	\$784	\$826	\$867
VDEP	12	\$221	\$232	\$244
Accessories				
CB9	3	\$57	\$57	\$57
MCB	4	\$396	\$396	\$396
CBT	6	\$255	\$255	\$255
CLDL	10	\$354	\$354	\$354
SQDL	4	\$372	\$372	\$372
TF4	1	\$99	\$99	\$99
CF4	1	\$71	\$71	\$71
VA48	6	\$182	\$182	\$182
VASH48	11	\$203	\$203	\$203
VACR48	11	\$208	\$208	\$208
DKD30	32	\$334	\$334	\$334
VKD36	29	\$256	\$256	\$256
SGH30	10	\$188	\$188	\$188
FS36	15	\$318	\$318	\$318
FS48	21	\$376	\$376	\$376
FS60	24	\$485	\$485	\$485
TUK	1	\$80	\$80	\$80
B12TDKIT	17	\$145	\$145	\$145

		Price Level 1	Price Level 2	Price Level 3
Cabinet	Weight	Shaker White	Shaker Antique White Shaker Dove Shaker Grey	Shaker Cinder Casseleberry Torrance York
Accessories (cont.)				
B15TDKIT	19	\$150	\$150	\$150
B18TDKIT	28	\$214	\$214	\$214
Roll Out Shelves				
RS18-Type A	11	\$151	\$151	\$151
RS21-Type A	12	\$163	\$163	\$163
RS24-Type A	14	\$175	\$175	\$175
RS27-Type A	15	\$186	\$186	\$186
RS30-Type A	16	\$196	\$196	\$196
RS33-Type A	17	\$207	\$207	\$207
RS36-Type A	18	\$217	\$217	\$217
Sample Door				
SD	7	\$13	\$13	\$13

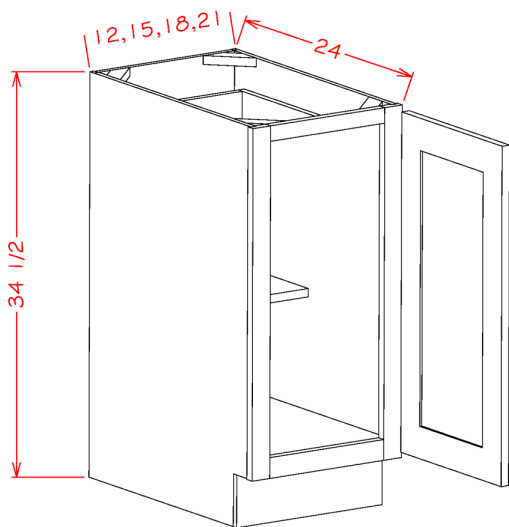
PRODUCT SPECIFICATIONS

Tray Base



Model	Description	Width	Height	Depth
BT9	Cabinet Dimension	9	34½	24
	Door Dimension	8½	29	¾

Full Height Single Door Bases

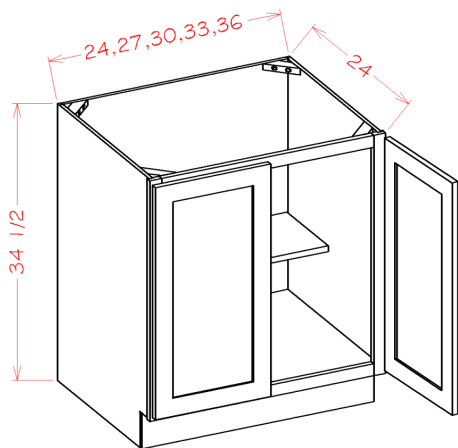


Model	Description	Width	Height	Depth
B12FH	Cabinet Dimension	12	34½	24
	Door Dimension	11½	29	¾
B15FH	Cabinet Dimension	12	34½	24
	Door Dimension	14½	29	¾
B18FH	Cabinet Dimension	18	34½	24
	Door Dimension	17½	29	¾
B21FH	Cabinet Dimension	21	34½	24
	Door Dimension	20½	29	¾

- Two boxes will be received when ordering this cabinet kit flat pack.

PRODUCT SPECIFICATIONS

Full Height Double Door Bases

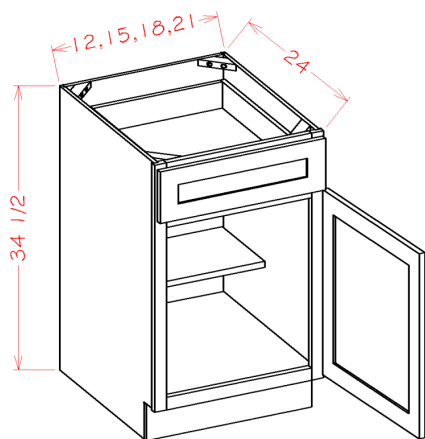


Model	Description	Width	Height	Depth
B24FH	Cabinet Dimension	24	34½	24
	Door Dimension	11¾	29	¾
B27FH	Cabinet Dimension	27	34½	24
	Door Dimension	13¼	29	¾
B30FH	Cabinet Dimension	30	34½	24
	Door Dimension	14¾	29	¾
B33FH	Cabinet Dimension	33	34½	24
	Door Dimension	16¼	29	¾
B36FH	Cabinet Dimension	36	34½	24
	Door Dimension	17¾	29	¾

- Two boxes will be received when ordering this cabinet kit flat pack.

35

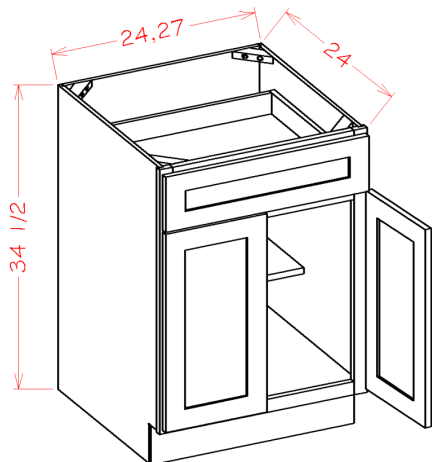
Single Door Single Drawer Bases



Model	Description	Width	Height	Depth
B12	Cabinet Dimension	12	34½	24
	Door Dimension	11½	22½	¾
	Drawer Front	11½	6¼	¾
	Drawer Box	8	3¼	20⅜
B15	Cabinet Dimension	15	34½	24
	Door Dimension	14½	22½	¾
	Drawer Front	14½	6¼	¾
	Drawer Box	11	3¼	20⅜
B18	Cabinet Dimension	18	34½	24
	Door Dimension	17½	22½	¾
	Drawer Front	17½	6¼	¾
	Drawer Box	14	3¼	20⅜
B21	Cabinet Dimension	21	34½	24
	Door Dimension	20½	22½	¾
	Drawer Front	20½	6¼	¾
	Drawer Box	17	3¼	20⅜

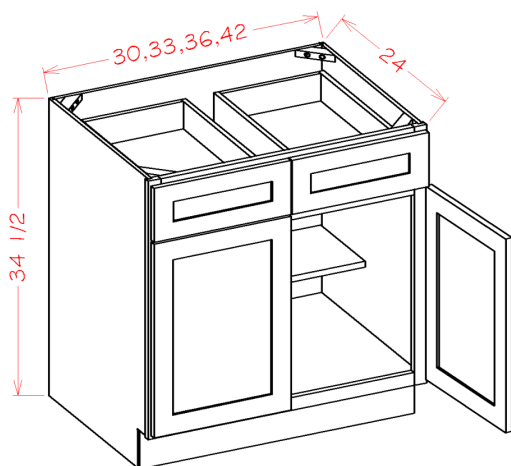
PRODUCT SPECIFICATIONS

Double Door Single Drawer Bases



Model	Description	Width	Height	Depth
B24	Cabinet Dimension	24	34½	24
	Door Dimension	11¾	22½	¾
	Drawer Front	23½	6¼	¾
	Drawer Box	20	3¼	20⅜
B27	Cabinet Dimension	27	34½	24
	Door Dimension	13¾	22½	¾
	Drawer Front	26½	6¼	¾
	Drawer Box	23	3¼	20⅜

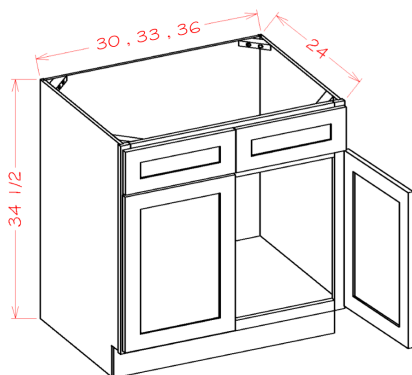
Double Door Double Drawer Bases



Model	Description	Width	Height	Depth
B30	Cabinet Dimension	30	34½	24
	Door Dimension	14¾	22½	¾
	Drawer Front	14¾	6¼	¾
	Drawer Box	12	3¼	20⅜
B33	Cabinet Dimension	33	34½	24
	Door Dimension	16¼	22½	¾
	Drawer Front	16¼	6¼	¾
	Drawer Box	13½	3¼	20⅜
B36	Cabinet Dimension	36	34½	24
	Door Dimension	17¾	22½	¾
	Drawer Front	17¾	6¼	¾
	Drawer Box	15	3¼	20⅜
B42	Cabinet Dimension	42	34½	24
	Door Dimension	20¾	22½	¾
	Drawer Front	20¾	6¼	¾
	Drawer Box	18	3¼	20⅜

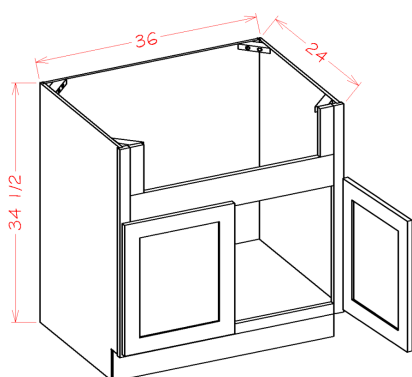
PRODUCT SPECIFICATIONS

Sink Bases



Model	Description	Width	Height	Depth
SB30	Cabinet Dimension	30	34½	24
	Door Dimension	14¾	22½	¾
	Drawer Front	14¾	6¼	¾
SB33	Cabinet Dimension	33	34½	24
	Door Dimension	16¼	22½	¾
	Drawer Front	16¼	6¼	¾
SB36	Cabinet Dimension	36	34½	24
	Door Dimension	17¾	22½	¾
	Drawer Front	17¾	6¼	¾

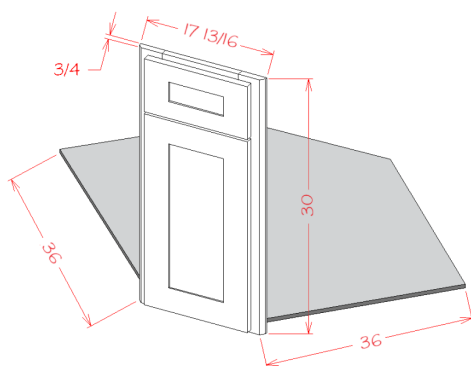
Sink Bases - Farm Sink



Model	Description	Width	Height	Depth
FSB36	Cabinet Dimension	36	34½	24
	Door Dimension	17¾	19	¾

- Fits up to a 33"W x 10"H farm sink

Sink Bases - Diagonal Sink Front

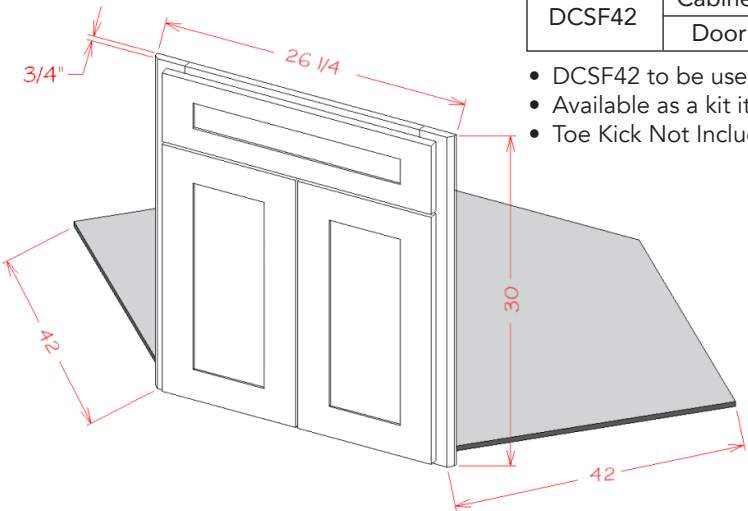


Model	Description	Width	Height	Depth
DCSF36	Cabinet Dimension	17 ¹³ / ₁₆	30	¾
	Door Dimension	15¼	22½	¾

- DCSF36 to be used in conjunction with SBF3636
- Available as a kit item SKU: DCFF36
- Toe Kick Not Included

PRODUCT SPECIFICATIONS

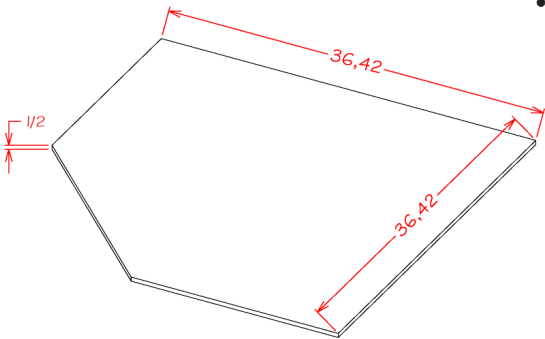
Sink Bases - Diagonal Sink Front



Model	Description	Width	Height	Depth
DCSF42	Cabinet Dimension	26 1/4	30	3/4
	Door Dimension	11 3/4	22 1/2	3/4

- DCSF42 to be used in conjunction with SBF4242
- Available as a kit item SKU: DCFF42
- Toe Kick Not Included

Sink Bases - Diagonal Sink Floor

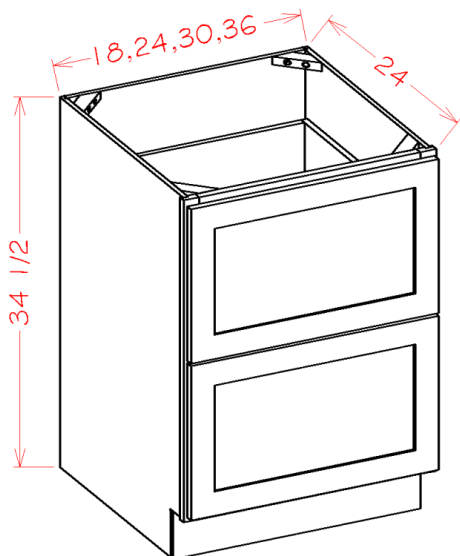


Model	Description	Width	Height	Depth
SBF3636	Cabinet Dimension	36	1/2	36
SBF4242	Door Dimension	42	1/2	42

- Sink Floor Only, Use with Corresponding DCSF

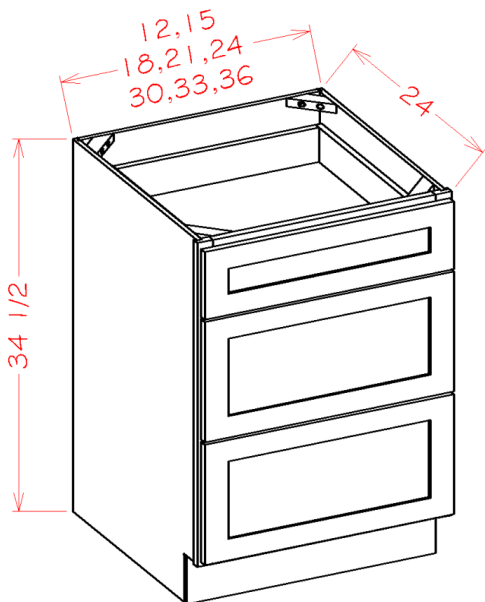
PRODUCT SPECIFICATIONS

Two Drawer Bases				
Model	Description	Width	Height	Depth
2DB18	Cabinet Dimension	18	34½	24
	Door Dimension	17½	14½	¾
	Drawer Front	14	8¼	20⅜
2DB24	Cabinet Dimension	24	34½	24
	Door Dimension	23½	14½	¾
	Drawer Front	20	8¼	20⅜
2DB30	Cabinet Dimension	30	34½	24
	Door Dimension	29½	14½	¾
	Drawer Front	26	8¼	20⅜
2DB36	Cabinet Dimension	36	34½	24
	Door Dimension	35½	14½	¾
	Drawer Front	32	8¼	20⅜



PRODUCT SPECIFICATIONS

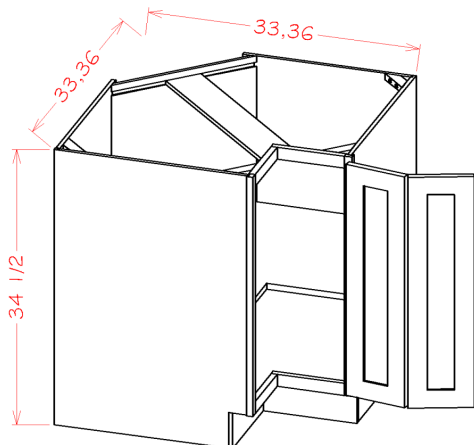
Three Drawer Base



Model	Description	Width	Height	Depth
3DB12	Cabinet Dimension	12	34½	24
	Top Drawer Front	11½	6¼	¾
	Bottom Drawer Front	11½	11⅞	¾
	Top Drawer Box	8	3⅜	20⅜
	Bottom Drawer Box	8	8¼	20⅜
3DB15	Cabinet Dimension	15	34½	24
	Top Drawer Front	14½	6¼	¾
	Bottom Drawer Front	14½	11⅞	¾
	Top Drawer Box	11	3⅜	20⅜
	Bottom Drawer Box	11	8¼	20⅜
3DB18	Cabinet Dimension	18	34½	24
	Top Drawer Front	17½	6¼	¾
	Bottom Drawer Front	17½	11⅞	¾
	Top Drawer Box	14	3⅜	20⅜
	Bottom Drawer Box	14	8¼	20⅜
3DB21	Cabinet Dimension	21	34½	24
	Top Drawer Front	20½	6¼	¾
	Bottom Drawer Front	20½	11⅞	¾
	Top Drawer Box	17½	3⅜	20⅜
	Bottom Drawer Box	17½	8¼	20⅜
3DB24	Cabinet Dimension	24	34½	24
	Top Drawer Front	23½	6¼	¾
	Bottom Drawer Front	23½	11⅞	¾
	Top Drawer Box	20	3⅜	20⅜
	Bottom Drawer Box	20	8¼	20⅜
3DB30	Cabinet Dimension	30	34½	24
	Top Drawer Front	29½	6¼	¾
	Bottom Drawer Front	29½	11⅞	¾
	Top Drawer Box	26	3⅜	20⅜
	Bottom Drawer Box	26	8¼	20⅜
3DB36	Cabinet Dimension	36	34½	24
	Top Drawer Front	35½	6¼	¾
	Bottom Drawer Front	35½	11⅞	¾
	Top Drawer Box	32	3⅜	20⅜
	Bottom Drawer Box	32	8¼	20⅜

PRODUCT SPECIFICATIONS

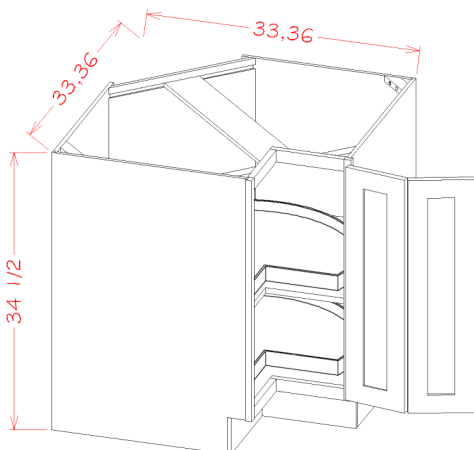
Base Easy Reach



Model	Description	Width	Height	Depth
BER33	Cabinet Dimension	33	34½	24
	Door Dimension	7⅝	29	¾
BER36	Cabinet Dimension	36	34½	24
	Door Dimension	10⅝	29	¾

41

Base Easy Reach with Lazy Susan Trays

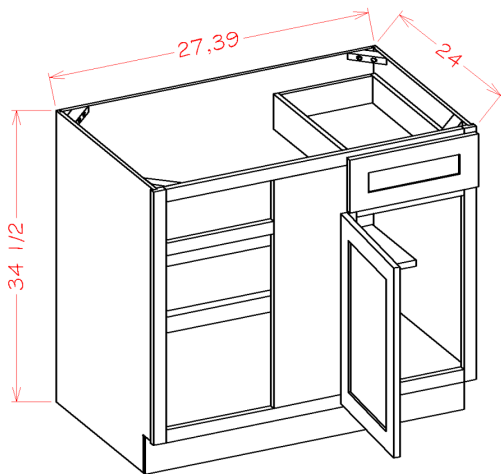


Model	Description	Width	Height	Depth
LSB33	Cabinet Dimension	33	34½	24
	Door Dimension	7⅝	29	¾
LSB36	Cabinet Dimension	36	34½	24
	Door Dimension	10⅝	29	¾

- LSB33 Inside Opening is 11.5" W and Wooden Lazy Susan Tray is 27.5" W (Comes in a separate box)
- LSB36 Inside Opening is 15.5" W and Wooden Lazy Susan Tray is 27.5" W (Comes in a separate box)
- Two boxes will be received when ordering this cabinet kit flat pack.

PRODUCT SPECIFICATIONS

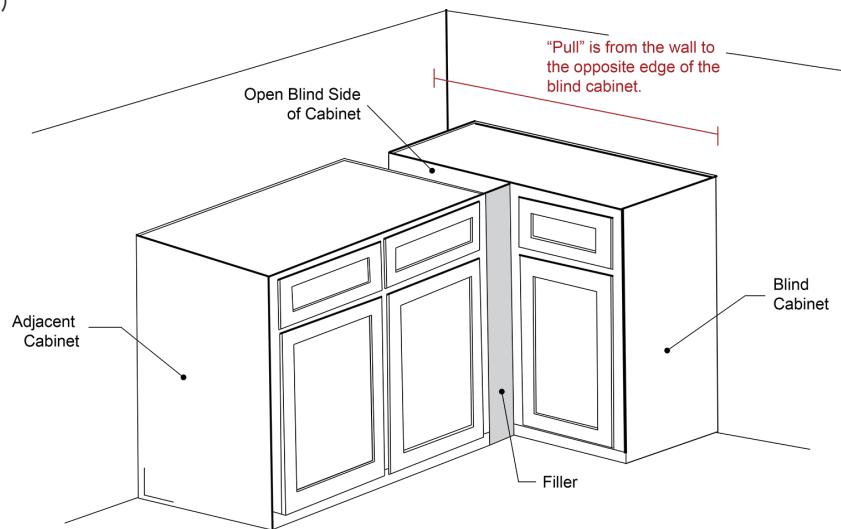
Blind Bases



Model	Description	Width	Height	Depth
BBC36	Door Opening	6 ³ / ₄	20 ¹ / ₂	22 ³ / ₄
	Cabinet Dimension	27	34 ¹ / ₂	24
	Door Dimension	9 ³ / ₄	22 ¹ / ₂	³ / ₄
	Drawer Front	9 ³ / ₄	6 ¹ / ₄	³ / ₄
	Drawer Box	6 ¹ / ₂	3 ³ / ₈	20 ³ / ₈
BBC42	Door Opening	12 ³ / ₄	20 ¹ / ₂	22 ³ / ₄
	Cabinet Dimension	39	34 ¹ / ₂	24
	Door Dimension	15 ³ / ₄	22 ¹ / ₂	³ / ₄
	Drawer Front	15 ³ / ₄	6 ¹ / ₄	³ / ₄
	Drawer Box	12 ³ / ₈	3 ³ / ₈	20 ³ / ₈

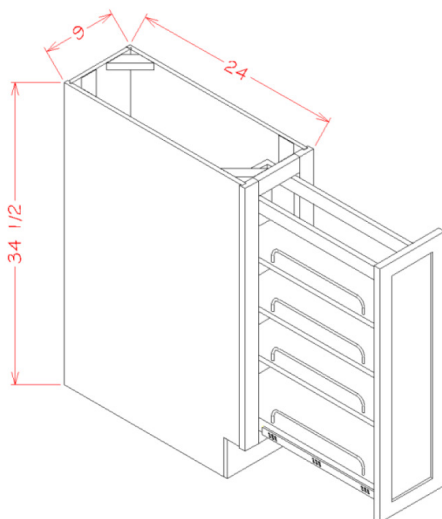
Model	Box Size	Min	Max	Stile
BBC36	27	36 ¹ / ₂	43	10
BBC42	39	42 ¹ / ₂	49	10

- Must Use Filler (not supplied)



PRODUCT SPECIFICATIONS

Accessory Base Cabinets - Full Height Door Base Kit with Shelf Pullout

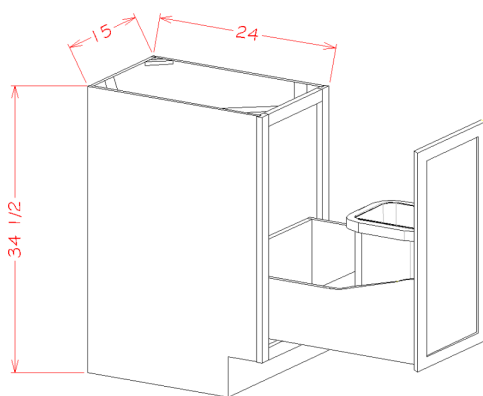


Model	Description	Width	Height	Depth
BT9PO	Cabinet Dimension	9	34½	24
	Door Dimension	8½	29	¾
	Pullout Dimension	6	25½	22 ¾

- Pullout is mounted to the cabinet floor and door.
- Full-extension slides with BLUMOTION soft-close (110 lb weight capacity).
- Two boxes will be received when ordering this cabinet kit flat pack.

43

Accessory Base Cabinets - Full Height Door Base Kit with Single Trashcan

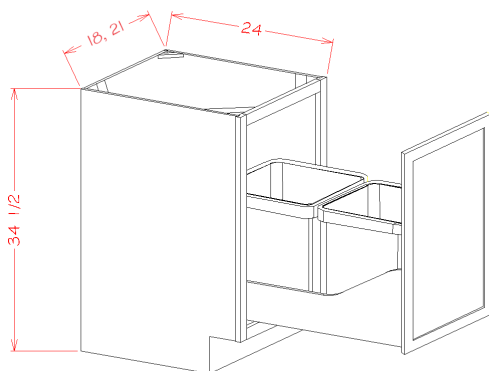


Model	Description	Width	Height	Depth
B15FHTCPO	Cabinet Dimension	15	34½	24
	Door Dimension	14½	29	¾
	Pullout Dimension	12	19½	21 ²¹ / ₃₂
	Trashcan Dimension	14 ³ / ₁₆	17 ⁷ / ₈	10½

- Pullout is mounted to the cabinet floor and door.
- Full-extension slides with BLUMOTION soft-close (110 lb weight capacity).
- Three boxes will be received when ordering this cabinet kit flat pack.

PRODUCT SPECIFICATIONS

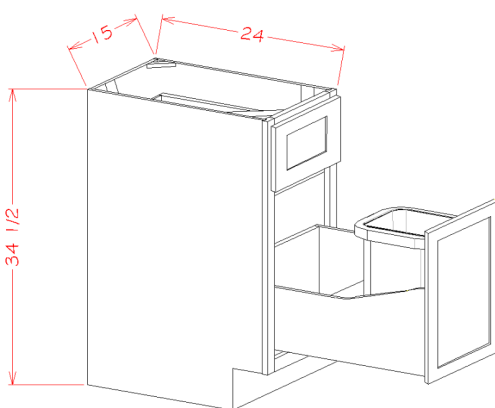
Accessory Base Cabinets - Full Height Door Base Kit with Double Trashcan Pullout



Model	Description	Width	Height	Depth
B18FHTCPO	Cabinet Dimension	18	34½	24
	Door Dimension	17½	29	¾
	Pullout Dimension	15	20¾	21 ²¹ / ₃₂
	Trashcan Dimension	14 ³ / ₁₆	17 ⁷ / ₈	10½
B21FHTCPO	Cabinet Dimension	21	34½	24
	Door Dimension	20½	29	¾
	Pullout Dimension	18	20¾	21 ²¹ / ₃₂
	Trashcan Dimension	14 ³ / ₁₆	17 ⁷ / ₈	10½

- Pullout is mounted to the cabinet floor and door.
- Full-extension slides with BLUMOTION soft-close (110 lb weight capacity).
- Three boxes will be received when ordering this cabinet kit flat pack.

Accessory Base Cabinets - Single Door Single Drawer Base Kit with Single Trashcan Pullout

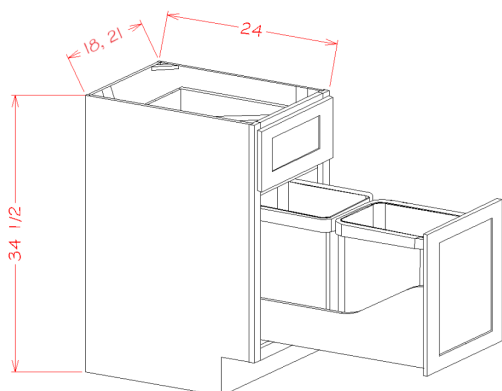


Model	Description	Width	Height	Depth
B15TCPO	Cabinet Dimension	15	34½	24
	Door Dimension	14½	22½	¾
	Drawer Front	14½	6 ¼	¾
	Drawer Box	11	3 ¼	20¾
	Pullout Dimension	12	19½	21 ²¹ / ₃₂
	Trashcan Dimension	14 ³ / ₁₆	17 ⁷ / ₈	10½

- Pullout is mounted to the cabinet floor and door.
- Full-extension slides with BLUMOTION soft-close (110 lb weight capacity).
- Two boxes will be received when ordering this cabinet kit flat pack.

PRODUCT SPECIFICATIONS

Accessory Base Cabinets - Single Door Single Drawer Base Kit with Double Trashcan Pullout

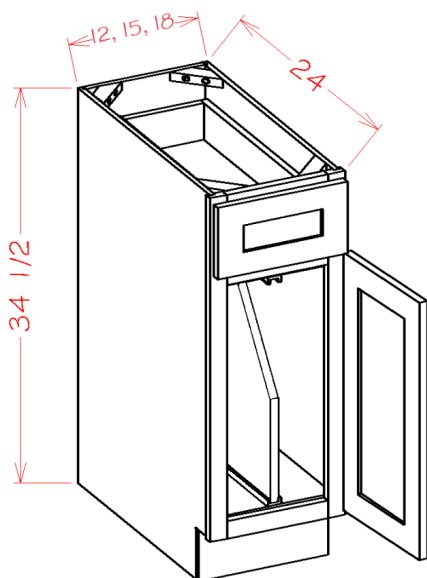


- Pullout is mounted to the cabinet floor and door.
- Full-extension slides with BLUMOTION soft-close (110 lb weight capacity).
- Two boxes will be received when ordering this cabinet kit flat pack.

Model	Description	Width	Height	Depth
B18TCPO	Cabinet Dimension	18	34½	24
	Door Dimension	17½	22½	¾
	Drawer Front	17½	6 ¼	¾
	Drawer Box	14	3 ¼	20¾
	Pullout Dimension	15	19½	21 ²¹ / ₃₂
	Trashcan Dimension	14 ³ / ₁₆	17⅞	10½
B21TCPO	Cabinet Dimension	21	34½	24
	Door Dimension	20½	22½	¾
	Drawer Front	20½	6 ¼	¾
	Drawer Box	17	3 ¼	20¾
	Pullout Dimension	18	19½	21 ²¹ / ₃₂
	Trashcan Dimension	14 ³ / ₁₆	17⅞	10½

45

Accessory Base Cabinets - Tray Divider Base Kit

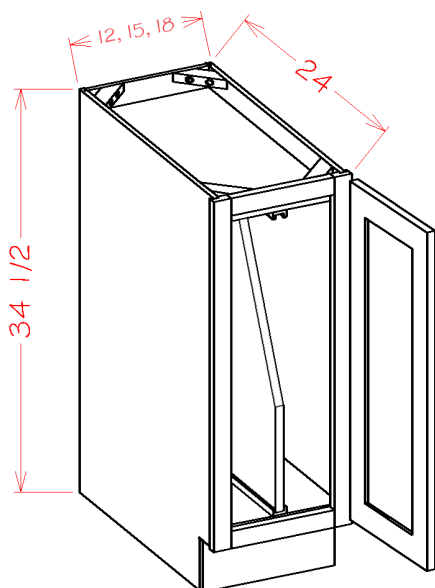


Model	Description	Width	Height	Depth
B12TD	Cabinet Dimension	12	34½	24
	Door Dimension	11½	22½	¾
	Drawer Front	11½	6¼	¾
	Drawer Box	8	3¼	20¾
	Tray Divider	¾	21	22½
B15TD	Cabinet Dimension	15	34½	24
	Door Dimension	14½	22½	¾
	Drawer Front	14½	6¼	¾
	Drawer Box	11	3¼	20¾
	Tray Divider	¾	21	22½
B18TD	Cabinet Dimension	18	34½	24
	Door Dimension	17½	22½	¾
	Drawer Front	17½	6¼	¾
	Drawer Box	14	3¼	20¾
	Tray Divider	¾	21	22½

- B18TD Includes Two Dividers
- Two boxes will be received when ordering this cabinet kit flat pack.

PRODUCT SPECIFICATIONS

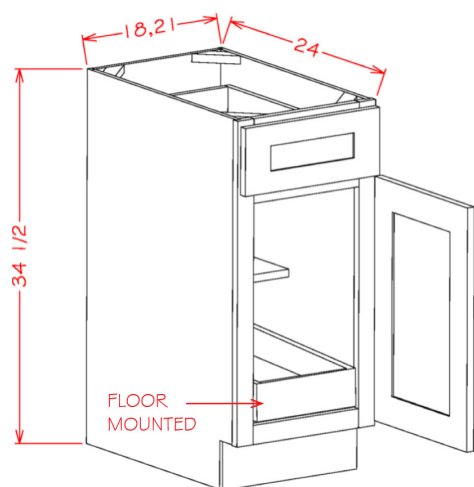
Accessory Base Cabinets - Full Height Tray Divider Base Kit



Model	Description	Width	Height	Depth
B12FHTD	Cabinet Dimension	12	34½	24
	Door Dimension	11½	29	¾
	Tray Divider	¾	27	22½
B15FHTD	Cabinet Dimension	15	34½	24
	Door Dimension	14½	29	¾
	Tray Divider	¾	27	22½
B18FHTD	Cabinet Dimension	18	34½	24
	Door Dimension	17½	29	¾
	Tray Divider	¾	27	22½

- B18FHTD Includes Two Dividers
- Three boxes will be received when ordering this cabinet kit flat pack.

Accessory Base Cabinets - Single Door Single Drawer One Rollout Shelf Base Kit

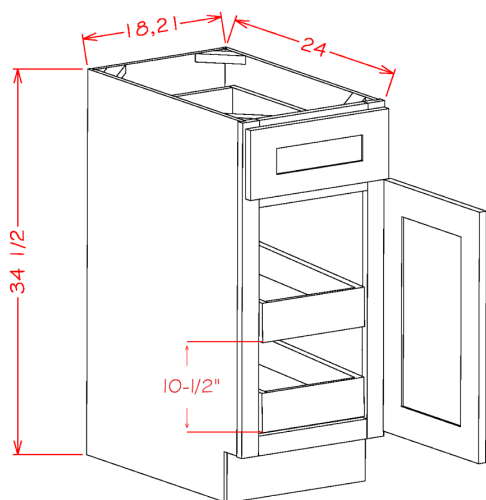


Model	Description	Width	Height	Depth
B181RS	Cabinet Dimension	18	34½	24
	Door Dimension	17½	22½	¾
	Drawer Front	17½	6¼	¾
	Drawer Box	14	3¼	20¾
	Rollout Shelf	13¾	3¾	20⅞
B211RS	Cabinet Dimension	21	34½	24
	Door Dimension	20½	22½	¾
	Drawer Front	20½	6¼	¾
	Drawer Box	17	3¼	20¾
	Rollout Shelf	16¾	3¾	20⅞

- Assembled cabinets with Rollout Shelf kits are ONLY installed as indicated in the line drawing
- Two boxes will be received when ordering this cabinet kit flat pack.
- Rollout Shelf glides are side mounted ball bearing with no soft close.

PRODUCT SPECIFICATIONS

Accessory Base Cabinets - Single Door Single Drawer Two Rollout Shelf Base Kit

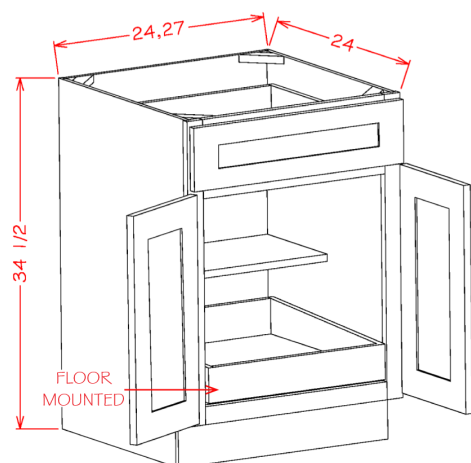


Model	Description	Width	Height	Depth
B182RS	Cabinet Dimension	18	34½	24
	Door Dimension	17½	22½	¾
	Drawer Front	17½	6¼	¾
	Drawer Box	14	3¼	20⅜
	Rollout Shelf	13⅜	3⅜	20⅞
B212RS	Cabinet Dimension	21	34½	24
	Door Dimension	20½	22½	¾
	Drawer Front	20½	6¼	¾
	Drawer Box	17	3¼	20⅜
	Rollout Shelf	16⅜	3⅜	20⅞

- Assembled cabinets with Rollout Shelf kits are ONLY installed as indicated in the line drawing
- Three boxes will be received when ordering this cabinet kit flat pack.
- Rollout Shelf glides are side mounted ball bearing with no soft close.

47

Accessory Base Cabinets - Double Door Single Drawer One Rollout Shelf Base Kit

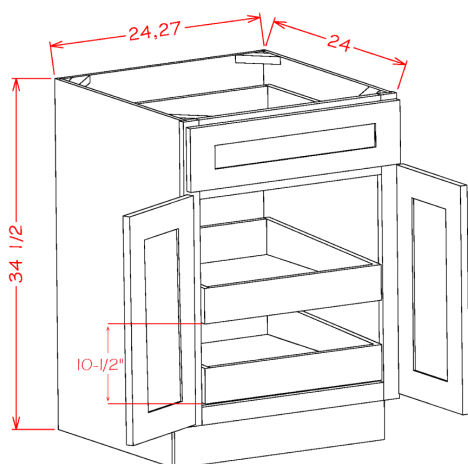


Model	Description	Width	Height	Depth
B241RS	Cabinet Dimension	24	34½	24
	Door Dimension	11¾	22½	¾
	Drawer Front	23½	6¼	¾
	Drawer Box	20	3¼	20⅜
	Rollout Shelf	19½	3⅜	20⅞
B271RS	Cabinet Dimension	27	34½	24
	Door Dimension	13¾	22½	¾
	Drawer Front	26½	6¼	¾
	Drawer Box	23	3¼	20⅜
	Rollout Shelf	22½	3⅜	20⅞

- Assembled cabinets with Rollout Shelf kits are ONLY installed as indicated in the line drawing
- Two boxes will be received when ordering this cabinet kit flat pack.
- Rollout Shelf glides are side mounted ball bearing with no soft close.

PRODUCT SPECIFICATIONS

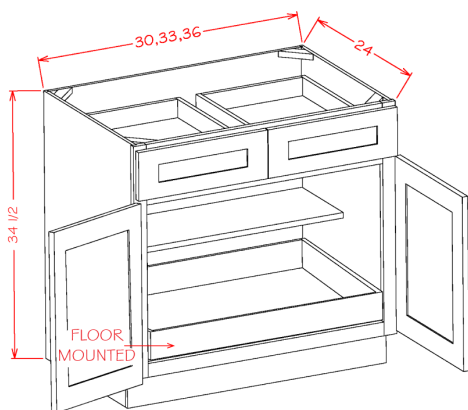
Accessory Base Cabinets - Double Door Single Drawer Two Rollout Shelf Base Kit



Model	Description	Width	Height	Depth
B242RS	Cabinet Dimension	24	34½	24
	Door Dimension	11¾	22½	¾
	Drawer Front	23½	6¼	¾
	Drawer Box	20	3¼	20⅜
	Rollout Shelf	19½	3⅜	20⅞
B272RS	Cabinet Dimension	27	34½	24
	Door Dimension	13¾	22½	¾
	Drawer Front	26½	6¼	¾
	Drawer Box	23	3¼	20⅜
	Rollout Shelf	22½	3⅜	20⅞

- Assembled cabinets with Rollout Shelf kits are ONLY installed as indicated in the line drawing
- Three boxes will be received when ordering this cabinet kit flat pack.
- Rollout Shelf glides are side mounted ball bearing with no soft close.

Accessory Base Cabinets - Double Door Double Drawer One Rollout Shelf Base Kit

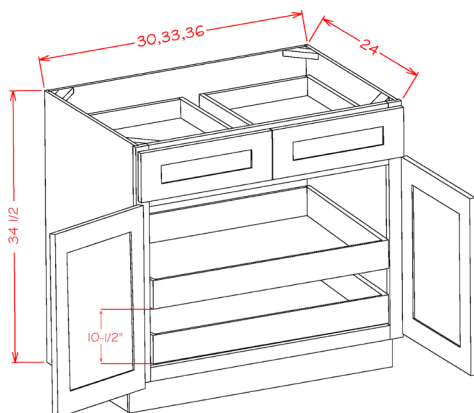


Model	Description	Width	Height	Depth
B301RS	Cabinet Dimension	30	34½	24
	Door Dimension	14¾	22½	¾
	Drawer Front	14¾	6¼	¾
	Drawer Box	12	3¼	20⅜
	Rollout Shelf	25⅜	3⅜	20⅞
B331RS	Cabinet Dimension	33	34½	24
	Door Dimension	16¼	22½	¾
	Drawer Front	16¼	6¼	¾
	Drawer Box	13½	3¼	20⅜
	Rollout Shelf	28⅜	3⅜	20⅞
B361RS	Cabinet Dimension	36	34½	24
	Door Dimension	17¾	22½	¾
	Drawer Front	17¾	6¼	¾
	Drawer Box	15	3¼	20⅜
	Rollout Shelf	31⅜	3⅜	20⅞

- Assembled cabinets with Rollout Shelf kits are ONLY installed as indicated in the line drawing
- Two boxes will be received when ordering this cabinet kit flat pack.
- Rollout Shelf glides are side mounted ball bearing with no soft close.

PRODUCT SPECIFICATIONS

Accessory Base Cabinets - Double Door Double Drawer Two Rollout Shelf Base Kit

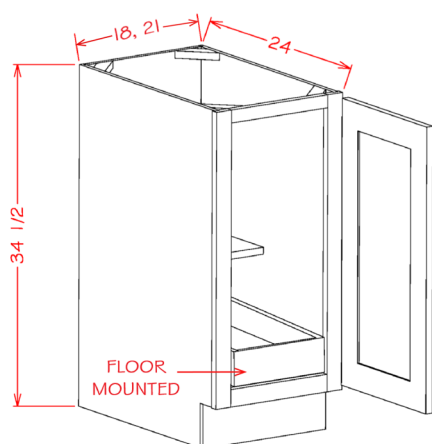


- Assembled cabinets with Rollout Shelf kits are ONLY installed as indicated in the line drawing
- Three boxes will be received when ordering this cabinet kit flat pack.
- Rollout Shelf glides are side mounted ball bearing with no soft close.

Model	Description	Width	Height	Depth
B302RS	Cabinet Dimension	30	34½	24
	Door Dimension	14¾	22½	¾
	Drawer Front	14¾	6¼	¾
	Drawer Box	12	3¼	20⅜
	Rollout Shelf	25⅜	3⅜	20⅞
B332RS	Cabinet Dimension	33	34½	24
	Door Dimension	16¼	22½	¾
	Drawer Front	16¼	6¼	¾
	Drawer Box	13½	3¼	20⅜
	Rollout Shelf	28⅜	3⅜	20⅞
B362RS	Cabinet Dimension	36	34½	24
	Door Dimension	17¾	22½	¾
	Drawer Front	17¾	6¼	¾
	Drawer Box	15	3¼	20⅜
	Rollout Shelf	31⅜	3⅜	20⅞

49

Accessory Base Cabinets - Single Full Height Door One Rollout Shelf Base Kit

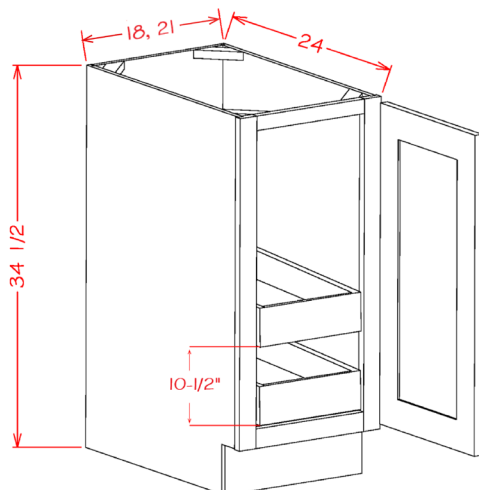


Model	Description	Width	Height	Depth
B18FH1RS	Cabinet Dimension	18	34½	24
	Door Dimension	17½	29	¾
	Rollout Shelf	13⅜	3⅜	20⅞
B21FH1RS	Cabinet Dimension	21	34½	24
	Door Dimension	20½	29	¾
	Rollout Shelf	16⅜	3⅜	20⅞

- Assembled cabinets with Rollout Shelf kits are ONLY installed as indicated in the line drawing
- Three boxes will be received when ordering this cabinet kit flat pack.
- Rollout Shelf glides are side mounted ball bearing with no soft close.

PRODUCT SPECIFICATIONS

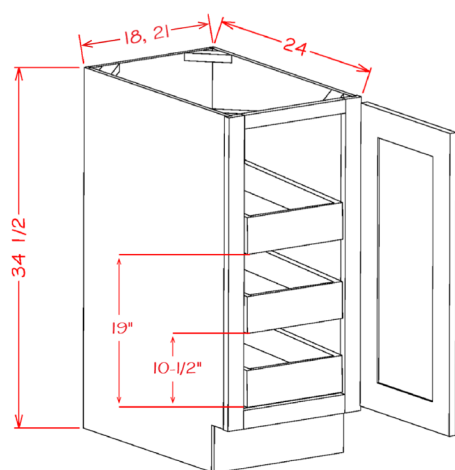
Accessory Base Cabinets - Single Full Height Door Two Rollout Shelf Base Kit



Model	Description	Width	Height	Depth
B18FH2RS	Cabinet Dimension	18	34½	24
	Door Dimension	17½	29	¾
	Rollout Shelf	13¾	3¾	20⅞
B21FH2RS	Cabinet Dimension	21	34½	24
	Door Dimension	20½	29	¾
	Rollout Shelf	16¾	3¾	20⅞

- Assembled cabinets with Rollout Shelf kits are ONLY installed as indicated in the line drawing
- Four boxes will be received when ordering this cabinet kit flat pack.
- Rollout Shelf glides are side mounted ball bearing with no soft close.

Accessory Base Cabinets - Single Full Height Door Three Rollout Shelf Base Kit

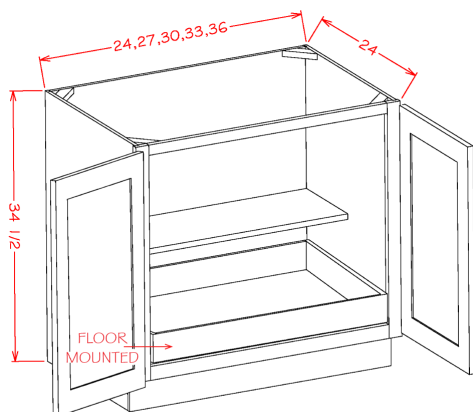


Model	Description	Width	Height	Depth
B18FH3RS	Cabinet Dimension	18	34½	24
	Door Dimension	17½	29	¾
	Rollout Shelf	13¾	3¾	20⅞
B21FH3RS	Cabinet Dimension	21	34½	24
	Door Dimension	20½	29	¾
	Rollout Shelf	16¾	3¾	20⅞

- Assembled cabinets with Rollout Shelf kits are ONLY installed as indicated in the line drawing
- Five boxes will be received when ordering this cabinet kit flat pack.
- Rollout Shelf glides are side mounted ball bearing with no soft close.

PRODUCT SPECIFICATIONS

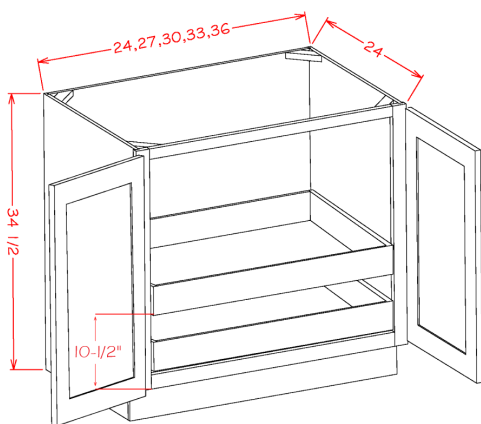
Accessory Base Cabinets - Double Full Height Door One Rollout Shelf Base Kit



- Assembled cabinets with Rollout Shelf kits are ONLY installed as indicated in the line drawing
- Three boxes will be received when ordering this cabinet kit flat pack.
- Rollout Shelf glides are side mounted ball bearing with no soft close.

Model	Description	Width	Height	Depth
B24FH1RS	Cabinet Dimension	24	34½	24
	Door Dimension	11¾	29	¾
	Rollout Shelf	19½	3¾	20⅞
B27FH1RS	Cabinet Dimension	27	34½	24
	Door Dimension	13¾	29	¾
	Rollout Shelf	22½	3¾	20⅞
B30FH1RS	Cabinet Dimension	30	34½	24
	Door Dimension	14¾	29	¾
	Rollout Shelf	25¾	3¾	20⅞
B33FH1RS	Cabinet Dimension	33	34½	24
	Door Dimension	16¾	29	¾
	Rollout Shelf	28¾	3¾	20⅞
B36FH1RS	Cabinet Dimension	36	34½	24
	Door Dimension	17¾	29	¾
	Rollout Shelf	31¾	3¾	20⅞

Accessory Base Cabinets - Double Full Height Door Two Rollout Shelf Base Kit

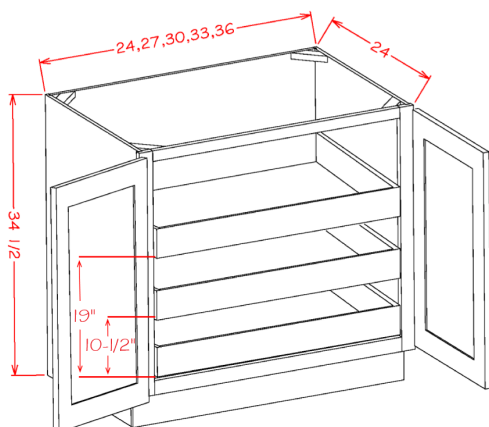


- Assembled cabinets with Rollout Shelf kits are ONLY installed as indicated in the line drawing
- Four boxes will be received when ordering this cabinet kit flat pack.
- Rollout Shelf glides are side mounted ball bearing with no soft close.

Model	Description	Width	Height	Depth
B24FH2RS	Cabinet Dimension	24	34½	24
	Door Dimension	11¾	29	¾
	Rollout Shelf	19½	3¾	20⅞
B27FH2RS	Cabinet Dimension	27	34½	24
	Door Dimension	13¾	29	¾
	Rollout Shelf	22½	3¾	20⅞
B30FH2RS	Cabinet Dimension	30	34½	24
	Door Dimension	14¾	29	¾
	Rollout Shelf	25¾	3¾	20⅞
B33FH2RS	Cabinet Dimension	33	34½	24
	Door Dimension	16¾	29	¾
	Rollout Shelf	28¾	3¾	20⅞
B36FH2RS	Cabinet Dimension	36	34½	24
	Door Dimension	17¾	29	¾
	Rollout Shelf	31¾	3¾	20⅞

PRODUCT SPECIFICATIONS

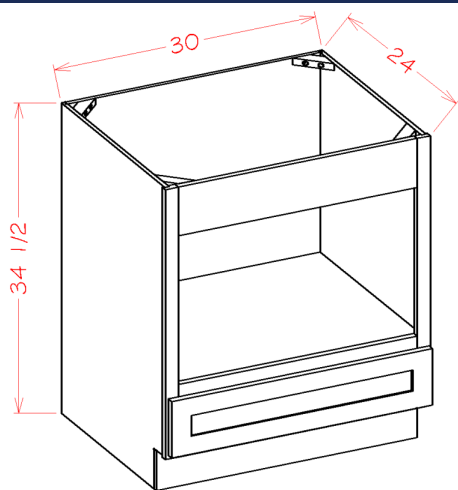
Accessory Base Cabinets - Double Full Height Door Three Rollout Shelf Base Kit



- Assembled cabinets with Rollout Shelf kits are ONLY installed as indicated in the line drawing
- Five boxes will be received when ordering this cabinet kit flat pack.
- Rollout Shelf glides are side mounted ball bearing with no soft close.

Model	Description	Width	Height	Depth
B24FH3RS	Cabinet Dimension	24	34½	24
	Door Dimension	11¾	29	¾
	Rollout Shelf	19½	3⅜	20⅞
B27FH3RS	Cabinet Dimension	27	34½	24
	Door Dimension	13¾	29	¾
	Rollout Shelf	22½	3⅜	20⅞
B30FH3RS	Cabinet Dimension	30	34½	24
	Door Dimension	14¾	29	¾
	Rollout Shelf	25⅜	3⅜	20⅞
B33FH3RS	Cabinet Dimension	33	34½	24
	Door Dimension	16¾	29	¾
	Rollout Shelf	28⅜	3⅜	20⅞
B36FH3RS	Cabinet Dimension	36	34½	24
	Door Dimension	17¾	29	¾
	Rollout Shelf	31⅜	3⅜	20⅞

Specialty Bases - Base Microwave Cabinet

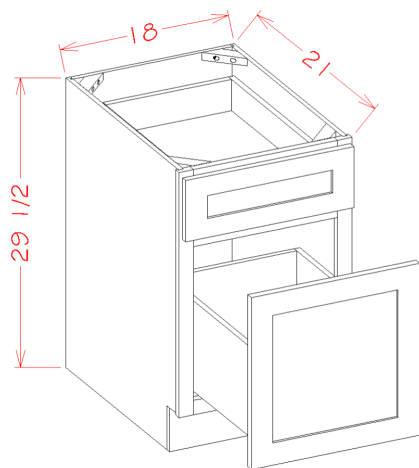


Model	Description	Width	Height	Depth
BMW30	Cabinet Dimension	30	34½	24
	Microwave Opening	26½	16½	23
	Drawer Front	29½	6¼	¾
	Drawer Box	26	3⅜	21

- Microwave Opening trimmable to 20⅞" High

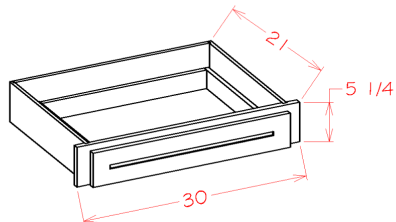
PRODUCT SPECIFICATIONS

Specialty Bases - Drawer File Base



Model	Description	Width	Height	Depth
DFB18	Cabinet Dimension	18	29½	21
	Top Drawer Front	17½	6¼	¾
	Bottom Drawer Front	17½	17½	¾
	Top Drawer Box	14	3¾	17¾
	Bottom Drawer Box	14	9¼	17¾

Specialty Bases - Desk Knee Drawer

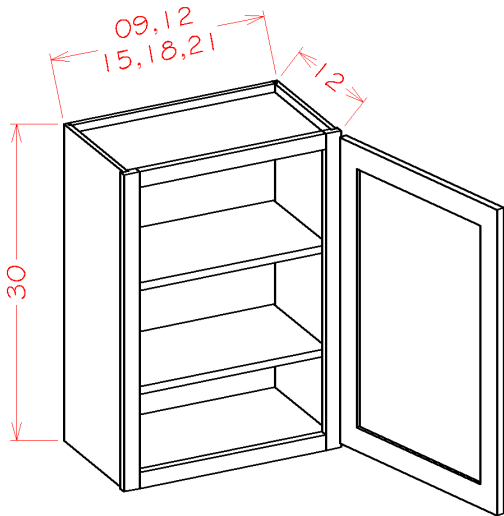


Model	Description	Width	Height	Depth
DKD30	Cabinet Dimension	30	5¼	21
	Drawer Front	26	4¾	¾
	Drawer Box	23	3¼	17¾

- Trimmable to 27" wide

PRODUCT SPECIFICATIONS

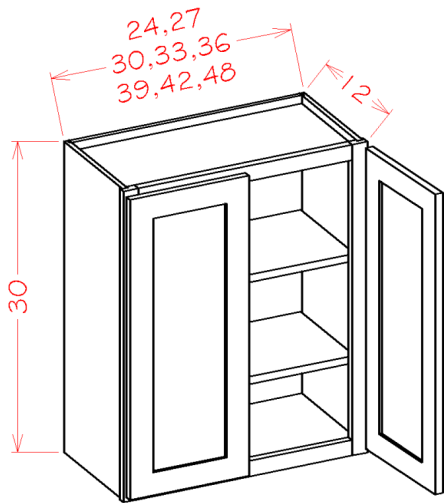
30" High Wall Cabinets - Single Door *2 adjustable Shelves



Model	Description	Width	Height	Depth
W0930	Cabinet Dimension	9	30	12
	Door Dimension	8½	29	¾
W1230	Cabinet Dimension	12	30	12
	Door Dimension	11½	29	¾
W1530	Cabinet Dimension	15	30	12
	Door Dimension	14½	29	¾
W1830	Cabinet Dimension	18	30	12
	Door Dimension	17½	29	¾
W2130	Cabinet Dimension	21	30	12
	Door Dimension	20½	29	¾

54

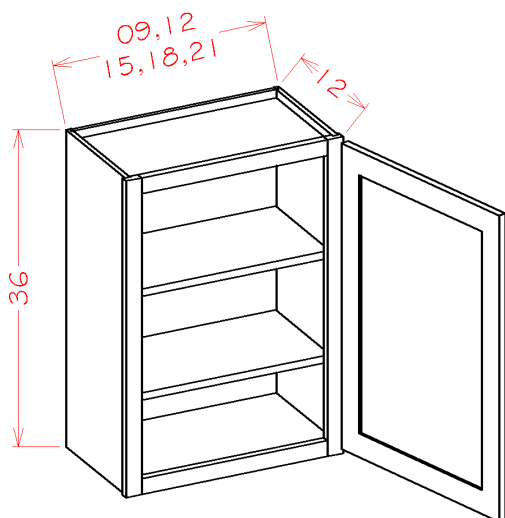
30" High Wall Cabinets - Double Door *2 adjustable Shelves



Model	Description	Width	Height	Depth
W2430	Cabinet Dimension	24	30	12
	Door Dimension	11¾	29	¾
W2730	Cabinet Dimension	27	30	12
	Door Dimension	13¾	29	¾
W3030	Cabinet Dimension	30	30	12
	Door Dimension	14¾	29	¾
W3330	Cabinet Dimension	33	30	12
	Door Dimension	16¾	29	¾
W3630	Cabinet Dimension	36	30	12
	Door Dimension	17¾	29	¾

PRODUCT SPECIFICATIONS

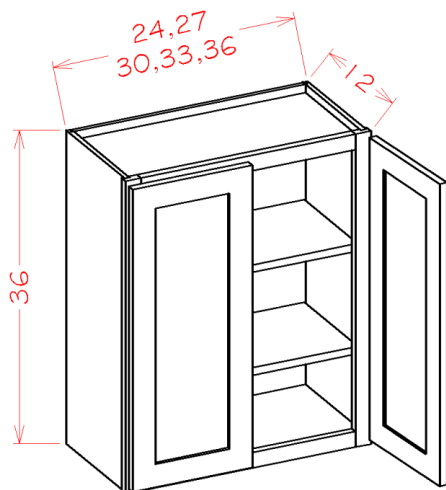
36" High Wall Cabinets - Single Door *2 adjustable Shelves



Model	Description	Width	Height	Depth
W0936	Cabinet Dimension	9	36	12
	Door Dimension	8½	35	¾
W1236	Cabinet Dimension	12	36	12
	Door Dimension	11½	35	¾
W1536	Cabinet Dimension	15	36	12
	Door Dimension	14½	35	¾
W1836	Cabinet Dimension	18	36	12
	Door Dimension	17½	35	¾
W2136	Cabinet Dimension	21	36	12
	Door Dimension	20½	35	¾

55

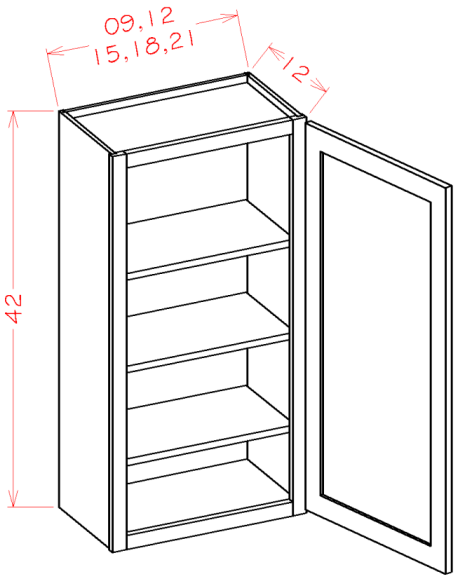
36" High Wall Cabinets - Double Door *2 adjustable Shelves



Model	Description	Width	Height	Depth
W2436	Cabinet Dimension	24	36	12
	Door Dimension	11¾	35	¾
W2736	Cabinet Dimension	27	36	12
	Door Dimension	13¾	35	¾
W3036	Cabinet Dimension	30	36	12
	Door Dimension	14¾	35	¾
W3336	Cabinet Dimension	33	36	12
	Door Dimension	16¾	35	¾
W3636	Cabinet Dimension	36	36	12
	Door Dimension	17¾	35	¾

PRODUCT SPECIFICATIONS

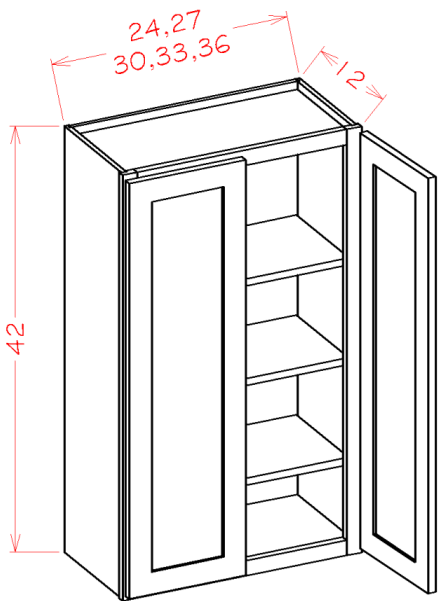
42" High Wall Cabinets - Single Door *3 adjustable Shelves



Model	Description	Width	Height	Depth
W0942	Cabinet Dimension	9	42	12
	Door Dimension	8½	41	¾
W1242	Cabinet Dimension	12	42	12
	Door Dimension	11½	41	¾
W1542	Cabinet Dimension	15	42	12
	Door Dimension	14½	41	¾
W1842	Cabinet Dimension	18	42	12
	Door Dimension	17½	41	¾
W2142	Cabinet Dimension	21	42	12
	Door Dimension	20½	41	¾

56

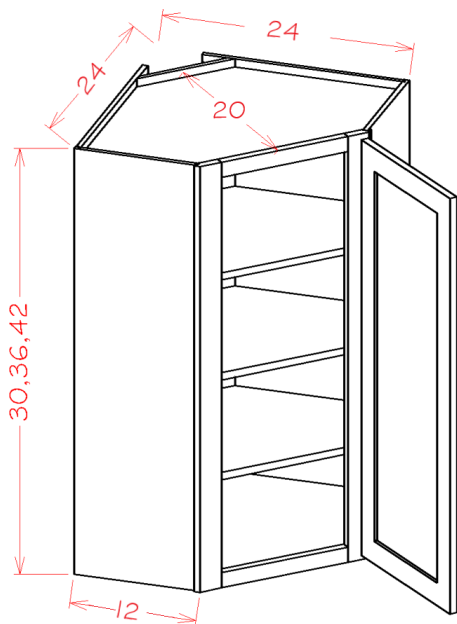
42" High Wall Cabinets - Double Door *3 adjustable Shelves



Model	Description	Width	Height	Depth
W2442	Cabinet Dimension	24	42	12
	Door Dimension	11¾	41	¾
W2742	Cabinet Dimension	27	42	12
	Door Dimension	13¾	41	¾
W3042	Cabinet Dimension	30	42	12
	Door Dimension	14¾	41	¾
W3342	Cabinet Dimension	33	42	12
	Door Dimension	16¼	41	¾
W3642	Cabinet Dimension	36	42	12
	Door Dimension	17¾	41	¾

PRODUCT SPECIFICATIONS

Diagonal Corner Wall Cabinets

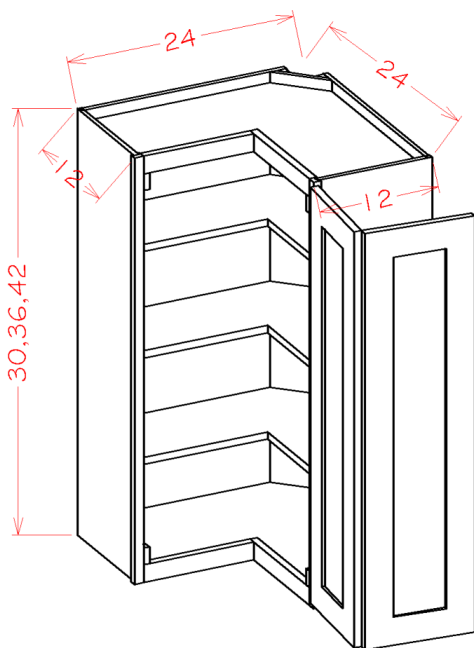


Model	Description	Width	Height	Depth
DCW2430	Cabinet Dimension	24	30	12
	Door Dimension	15 $\frac{1}{4}$	29	$\frac{3}{4}$
DCW2436	Cabinet Dimension	24	36	12
	Door Dimension	15 $\frac{1}{4}$	35	$\frac{3}{4}$
DCW2442	Cabinet Dimension	24	42	12
	Door Dimension	15 $\frac{1}{4}$	41	$\frac{3}{4}$

- DCW Inside Openings are 12 $\frac{1}{8}$ " Wide
- 30 and 36"H cabinets only have two shelves.

57

Wall Easy Reach

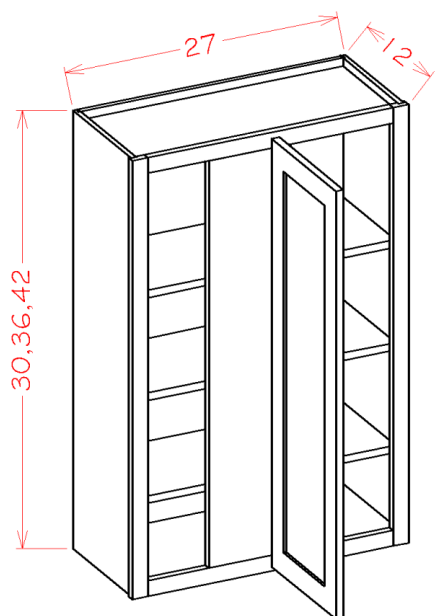


Model	Description	Width	Height	Depth
WER2430	Cabinet Dimension	24	30	12
	Door Dimension	10 $\frac{5}{8}$	29	$\frac{3}{4}$
WER2436	Cabinet Dimension	24	36	12
	Door Dimension	10 $\frac{5}{8}$	35	$\frac{3}{4}$
WER2442	Cabinet Dimension	24	42	12
	Door Dimension	10 $\frac{5}{8}$	41	$\frac{3}{4}$

- 30 and 36"H cabinets only have two shelves.

PRODUCT SPECIFICATIONS

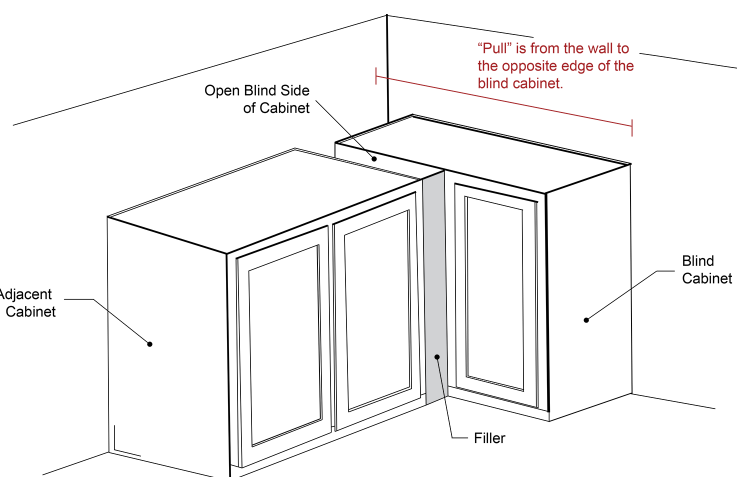
Wall Blind Cabinets



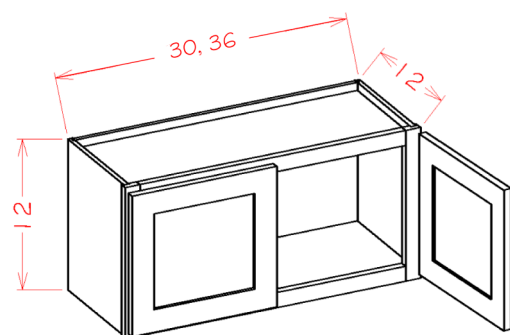
Box Size	Min	Max	Stile
27	28	31	8

- Must Use Filler (not supplied)

Model	Description	Width	Height	Depth
WBC2730	Cabinet Dimension	27	30	12
	Door Dimension	12½	29	¾
	Door Opening	7¾	26½	12
WBC2736	Cabinet Dimension	27	36	12
	Door Dimension	12½	35	¾
	Door Opening	7¾	32½	12
WBC2742	Cabinet Dimension	27	42	12
	Door Dimension	12½	41	¾
	Door Opening	7¾	38½	12



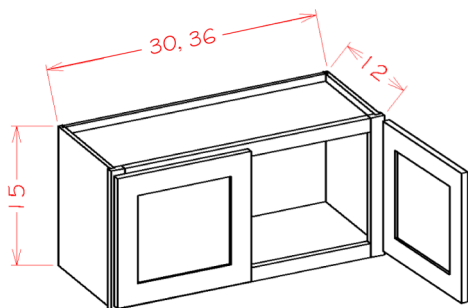
Bridge Cabinets - 12" High



Model	Description	Width	Height	Depth
W3012	Cabinet Dimension	30	12	12
	Door Dimension	14¾	11	¾
W3612	Cabinet Dimension	36	12	12
	Door Dimension	17¾	11	¾

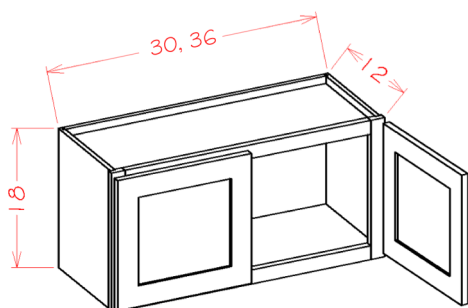
PRODUCT SPECIFICATIONS

Bridge Cabinets - 15" High



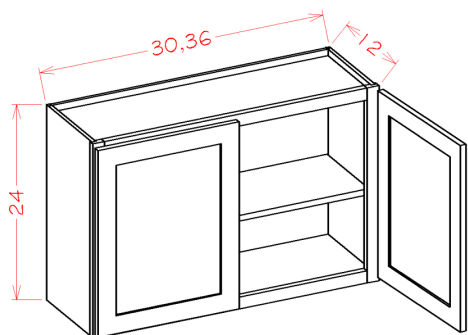
Model	Description	Width	Height	Depth
W3015	Cabinet Dimension	30	15	12
	Door Dimension	14 $\frac{3}{4}$	14	$\frac{3}{4}$
W3615	Cabinet Dimension	36	15	12
	Door Dimension	17 $\frac{3}{4}$	14	$\frac{3}{4}$

Bridge Cabinets - 18" High



Model	Description	Width	Height	Depth
W3018	Cabinet Dimension	30	18	12
	Door Dimension	14 $\frac{3}{4}$	17	$\frac{3}{4}$
W3618	Cabinet Dimension	36	18	12
	Door Dimension	17 $\frac{3}{4}$	17	$\frac{3}{4}$

Bridge Cabinets - 24" High

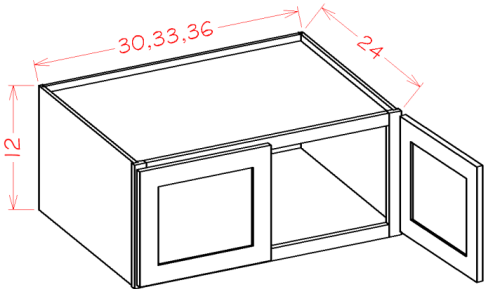


Model	Description	Width	Height	Depth
W3024	Cabinet Dimension	30	24	12
	Door Dimension	14 $\frac{3}{4}$	23	$\frac{3}{4}$
W3624	Cabinet Dimension	36	24	12
	Door Dimension	17 $\frac{3}{4}$	23	$\frac{3}{4}$

- All 24" High Cabinets Include One Inner Shelf

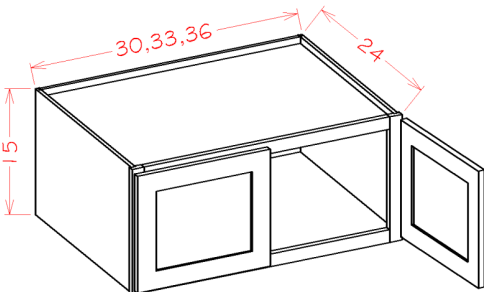
PRODUCT SPECIFICATIONS

Wall Refrigerator Cabinets - 12" H (24" deep)



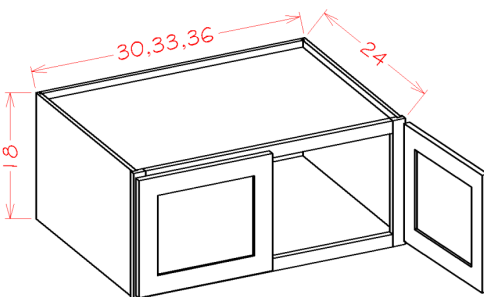
Model	Description	Width	Height	Depth
W301224	Cabinet Dimension	30	12	24
	Door Dimension	14¾	11	¾
W331224	Cabinet Dimension	33	12	24
	Door Dimension	16½	11	¾
W361224	Cabinet Dimension	36	12	24
	Door Dimension	17¾	11	¾

Wall Refrigerator Cabinets - 15" H (24" deep)



Model	Description	Width	Height	Depth
W301524	Cabinet Dimension	30	15	24
	Door Dimension	14¾	14	¾
W331524	Cabinet Dimension	33	15	24
	Door Dimension	16½	14	¾
W361524	Cabinet Dimension	36	15	24
	Door Dimension	17¾	14	¾

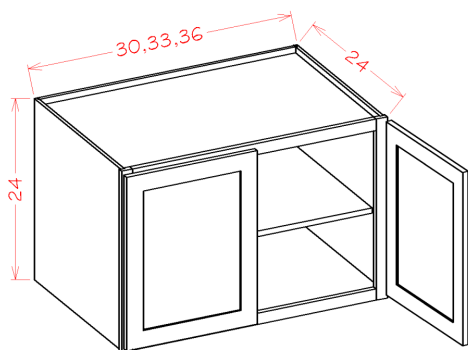
Wall Refrigerator Cabinets - 18" H (24" deep)



Model	Description	Width	Height	Depth
W301824	Cabinet Dimension	30	18	24
	Door Dimension	14¾	17	¾
W331824	Cabinet Dimension	33	18	24
	Door Dimension	16½	17	¾
W361824	Cabinet Dimension	36	18	24
	Door Dimension	17¾	17	¾

PRODUCT SPECIFICATIONS

Wall Refrigerator Cabinets - 24" H (24" deep)

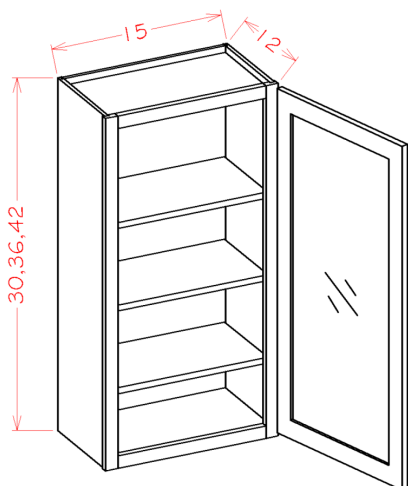


Model	Description	Width	Height	Depth
W302424	Cabinet Dimension	30	24	24
	Door Dimension	14¾	23	¾
W332424	Cabinet Dimension	33	24	24
	Door Dimension	16½	23	¾
W362424	Cabinet Dimension	36	24	24
	Door Dimension	17¾	23	¾

- All 24" High Cabinets Include One Inner Shelf

61

Glass Door Wall Cabinets - Single Door

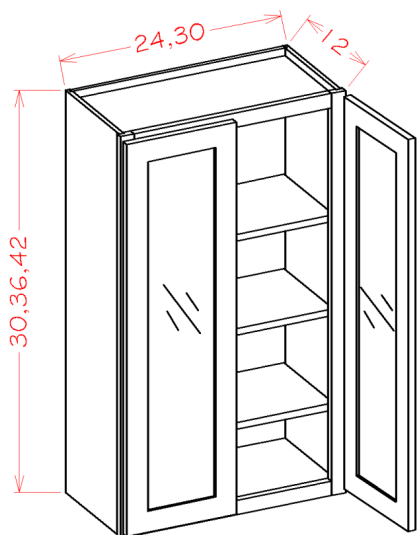


Model	Description	Width	Height	Depth
W1530GD	Cabinet Dimension	15	30	12
	Door Dimension	14½	29	¾
W1536GD	Cabinet Dimension	15	36	12
	Door Dimension	14½	35	¾
W1542GD	Cabinet Dimension	15	42	12
	Door Dimension	14½	41	¾

- These cabinets do not come with mullions or glass
- The interior is painted/stained to match the exterior

PRODUCT SPECIFICATIONS

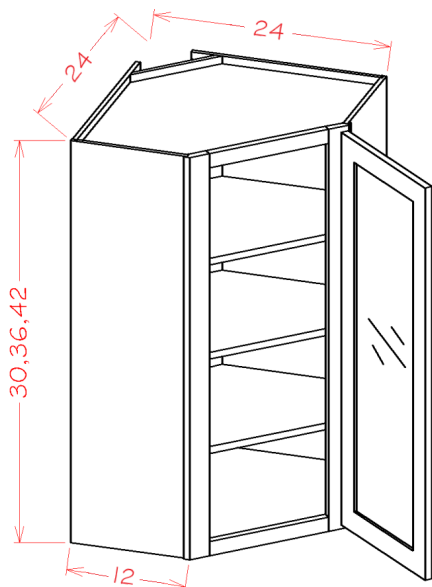
Glass Door Wall Cabinets - Double Door



Model	Description	Width	Height	Depth
W2430GD	Cabinet Dimension	24	30	12
	Door Dimension	11 $\frac{3}{4}$	29	$\frac{3}{4}$
W2436GD	Cabinet Dimension	24	36	12
	Door Dimension	11 $\frac{3}{4}$	35	$\frac{3}{4}$
W2442GD	Cabinet Dimension	24	42	12
	Door Dimension	11 $\frac{3}{4}$	41	$\frac{3}{4}$
W3030GD	Cabinet Dimension	30	30	12
	Door Dimension	14 $\frac{3}{4}$	29	$\frac{3}{4}$
W3036GD	Cabinet Dimension	30	36	12
	Door Dimension	14 $\frac{3}{4}$	35	$\frac{3}{4}$
W3042GD	Cabinet Dimension	30	42	12
	Door Dimension	14 $\frac{3}{4}$	41	$\frac{3}{4}$

- These cabinets do not come with mullions or glass
- The interior is painted/stained to match the exterior

Glass Door Diagonal Wall Cabinet

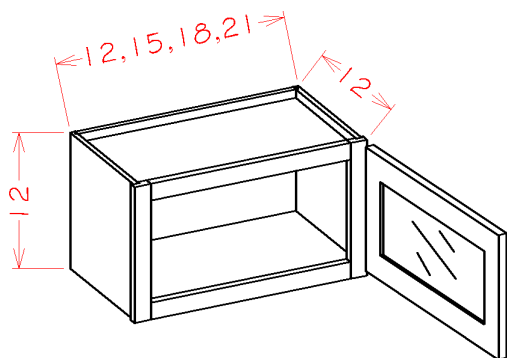


Model	Description	Width	Height	Depth
DCW2430GD	Cabinet Dimension	24	30	12
	Door Dimension	15 $\frac{1}{4}$	29	$\frac{3}{4}$
DCW2436GD	Cabinet Dimension	24	36	12
	Door Dimension	15 $\frac{1}{4}$	35	$\frac{3}{4}$
DCW2442GD	Cabinet Dimension	24	42	12
	Door Dimension	15 $\frac{1}{4}$	41	$\frac{3}{4}$

- These cabinets do not come with mullions or glass
- The interior is painted/stained to match the exterior
- DCW Inside Openings are 12 $\frac{1}{8}$ " Wide

PRODUCT SPECIFICATIONS

Glass Door Wall Stacker Cabinets 12"H - Single Door

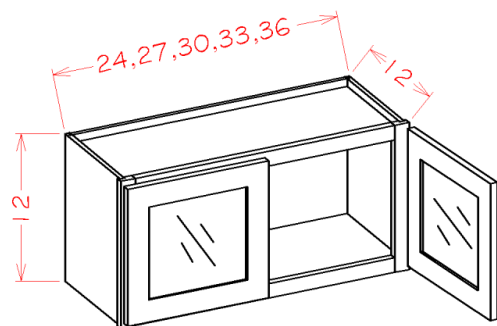


Model	Description	Width	Height	Depth
W1212GD	Cabinet Dimension	12	12	12
	Door Dimension	11½	11	¾
W1512GD	Cabinet Dimension	15	12	12
	Door Dimension	14½	11	¾
W1812GD	Cabinet Dimension	18	12	12
	Door Dimension	17½	11	¾
W2112GD	Cabinet Dimension	21	12	12
	Door Dimension	20½	11	¾

- These cabinets do not come with mullions or glass
- The interior is painted/stained to match the exterior

63

Glass Door Wall Stacker Cabinets 12"H - Double Door

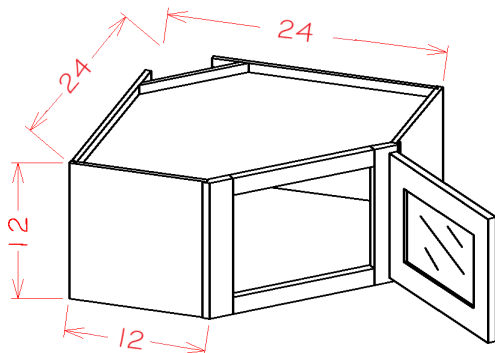


Model	Description	Width	Height	Depth
W2412GD	Cabinet Dimension	24	12	12
	Door Dimension	11¾	11	¾
W2712GD	Cabinet Dimension	27	12	12
	Door Dimension	13¾	11	¾
W3012GD	Cabinet Dimension	30	12	12
	Door Dimension	14¾	11	¾
W3312GD	Cabinet Dimension	33	12	12
	Door Dimension	16¾	11	¾
W3612GD	Cabinet Dimension	36	12	12
	Door Dimension	17¾	11	¾

- These cabinets do not come with mullions or glass
- The interior is painted/stained to match the exterior

PRODUCT SPECIFICATIONS

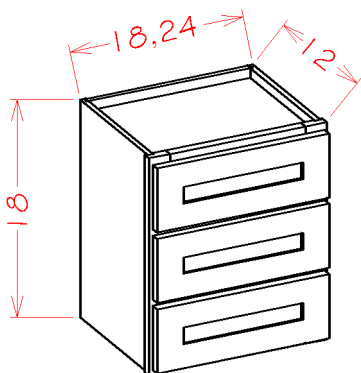
Glass Door Diagonal Wall Stacker Cabinets 12" H



Model	Description	Width	Height	Depth
DCW2412GD	Cabinet Dimension	24	12	12
	Door Dimension	15¼	11	¾

- These cabinets do not come with mullions or glass
- The interior is painted/stained to match the exterior

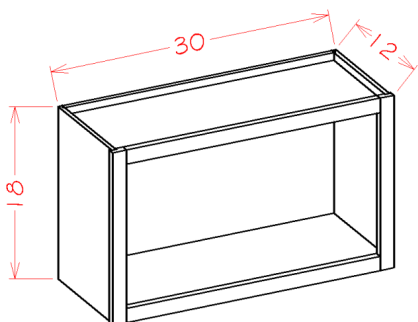
Wall Accessory Cabinets - Three Drawer Tower Stacking Cabinet



Model	Description	Width	Height	Depth
W3D18	Cabinet Dimension	18	18	12
	Drawer Front	17½	5⅜	¾
	Drawer Box	13½	2	9⅞
W3D24	Cabinet Dimension	24	18	12
	Drawer Front	23½	5⅜	¾
	Drawer Box	19½	2	9⅞

- Side mounted ball bearing glides with no soft close

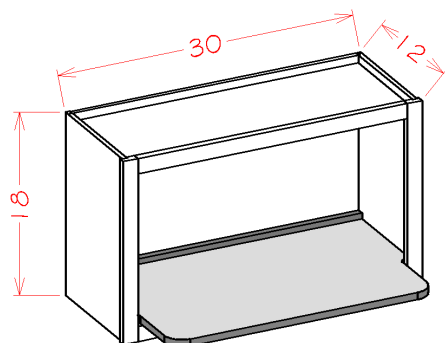
Wall Accessory Cabinets - Wall Open Cabinet



Model	Description	Width	Height	Depth
WOC3018	Cabinet Dimension	30	18	12
	No Doors	N/A	N/A	N/A

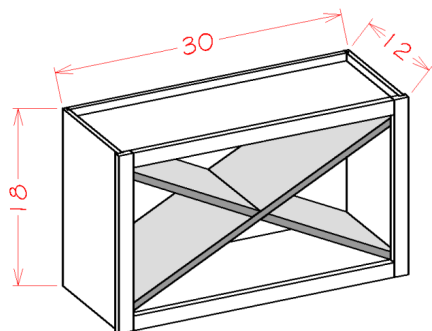
PRODUCT SPECIFICATIONS

Wall Accessory Cabinets - Wall Open Cabinet Microwave Shelf Insert



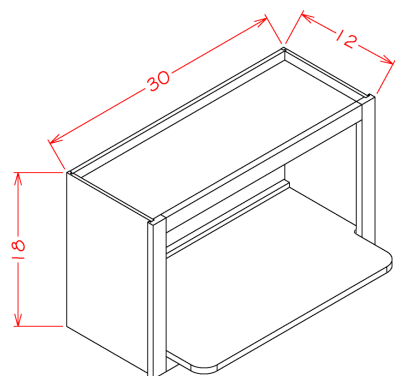
Model	Description	Width	Height	Depth
WMSSHELF	Installed Shelf Dimension	26½	¾	17

Wall Accessory Cabinets - Wall Open Cabinet - X Rack Insert



Model	Description	Width	Height	Depth
WXRSHELF	Installed Shelf Dimension	26½	14½	11

Wall Accessory Cabinets - Wall Microwave Cabinet Kits



Model	Description	Width	Height	Depth
WMS3018	Cabinet Dimension	30	18	12
	Shelf Dimension	26½	¾	17

- Two boxes will be received when ordering this cabinet kit flat pack.

PRODUCT SPECIFICATIONS

Wall Accessory Cabinets - Wall X Rack Cabinet Kit

Model	Description	Width	Height	Depth
WXR3018	Cabinet Dimension	30	18	12
	Shelf Dimension	26½	14½	11

- Two boxes will be received when ordering this cabinet kit flat pack.

Wall Accessory Cabinets - Wine Rack

Model	Description	Width	Height	Depth
WRC2430	Cabinet Dimension	24	30	12

- Fits 17 Bottles
- For optimal functionality, insert rear lattice 1-1/2" from the back of the cabinet.

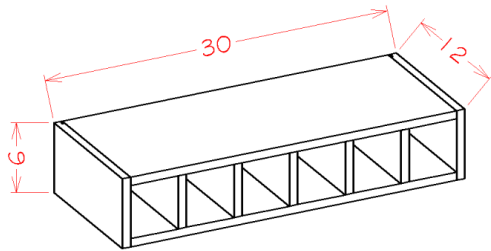
Wall Accessory Cabinets - Wine Rack

Model	Description	Width	Height	Depth
WRC3018	Cabinet Dimension	30	18	12

- Fits 10 Bottles
- For optimal functionality, insert rear lattice 1-1/2" from the back of the cabinet.

PRODUCT SPECIFICATIONS

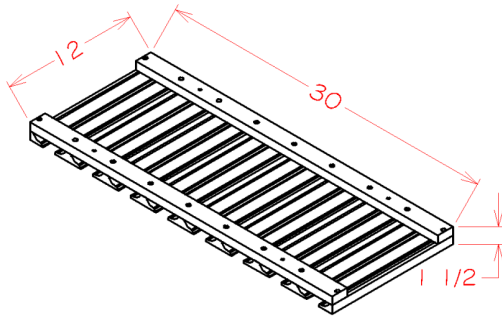
Wall Accessory Cabinets - Wine Cubby



Model	Description	Width	Height	Depth
WWC630	Cabinet Dimension	30	6	12

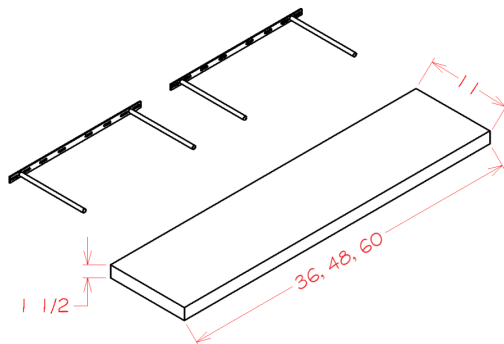
- Fits 6 Bottles

Specialty Wall - Stem Glass Holder



Model	Description	Width	Height	Depth
SGH30	Dimension	30	1½	12

Specialty Wall - Floating Shelves

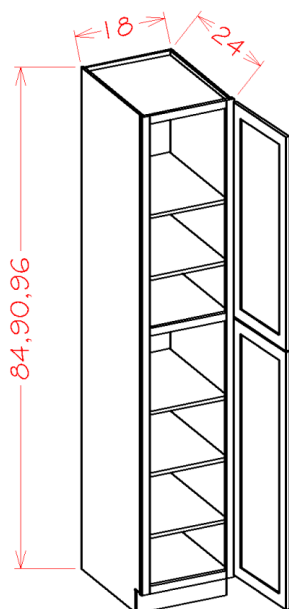


Model	Description	Width	Height	Depth
FS36	Dimension	36	1½	11
FS48	Dimension	48	1½	11
FS60	Dimension	60	1½	11

- 36"W floating shelf only has one mounting bracket.
- Recommended Max Weight: 25 lbs

PRODUCT SPECIFICATIONS

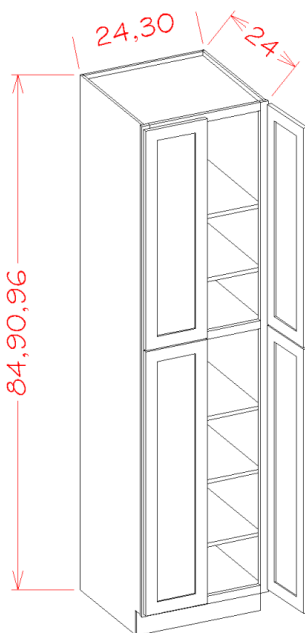
Utility Cabinets - Two Doors



Model	Description	Width	Height	Depth
U188424	Cabinet Dimension	18	84	24
	Top Door Dimension	17½	29	¾
	Bottom Door Dimension	17½	49¼	¾
U189024	Cabinet Dimension	18	90	24
	Top Door Dimension	17½	35	¾
	Bottom Door Dimension	17½	49¼	¾
U189624	Cabinet Dimension	18	96	24
	Top Door Dimension	17½	41	¾
	Bottom Door Dimension	17½	49¼	¾

- Shaker & Torrance doors have a horizontal rail in the center of the bottom door.

Utility Cabinets - Four Doors

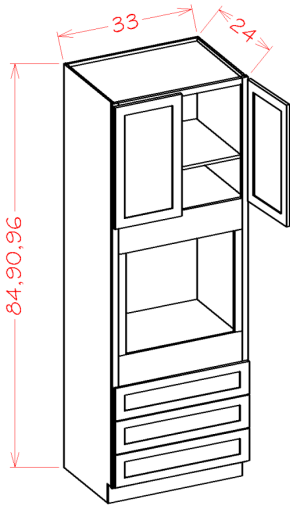


Model	Description	Width	Height	Depth
U248424	Cabinet Dimension	24	84	24
	Top Door Dimension	11¾	29	¾
	Bottom Door Dimension	11¾	49¼	¾
U249024	Cabinet Dimension	24	90	24
	Top Door Dimension	11¾	35	¾
	Bottom Door Dimension	11¾	49¼	¾
U249624	Cabinet Dimension	24	96	24
	Top Door Dimension	11¾	41	¾
	Bottom Door Dimension	11¾	49¼	¾
U309024	Cabinet Dimension	30	90	24
	Top Door Dimension	14¾	35	¾
	Bottom Door Dimension	14¾	49¼	¾
U309624	Cabinet Dimension	30	96	24
	Top Door Dimension	14¾	41	¾
	Bottom Door Dimension	14¾	49¼	¾

- Shaker & Torrance doors have a horizontal rail in the center of the bottom door.

PRODUCT SPECIFICATIONS

Oven Cabinets

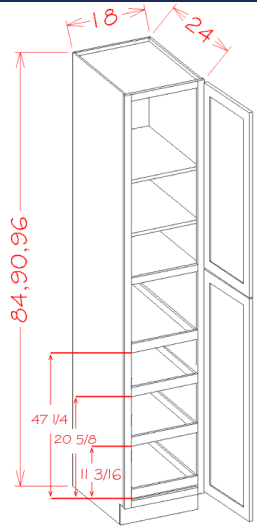


- Oven opening can be modified to accommodate a double oven
- Height up to 40" with removal of top drawers/cut down of top rails
- Width up to 31½" wide with cut down of stiles

Model	Description	Width	Height	Depth
O338424	Cabinet Dimension	33	84	24
	Door Dimension	16¼	17	¾
	Drawer Fronts	32½	7¾	¾
	Drawer Boxes	29	5⅛	20⅜
	Oven Opening	26½	24⅜	22¾
O339024	Cabinet Dimension	33	90	24
	Door Dimension	16¼	23	¾
	Drawer Fronts	32½	7¾	¾
	Drawer Boxes	29	5⅛	20⅜
	Oven Opening	26½	24⅜	22¾
O339624	Cabinet Dimension	33	96	24
	Door Dimension	16¼	29	¾
	Drawer Fronts	32½	7¾	¾
	Oven Opening	26½	24⅜	22¾

69

Accessory Tall Cabinets - Two Door Utility Four Rollout Shelf Cabinet Kit

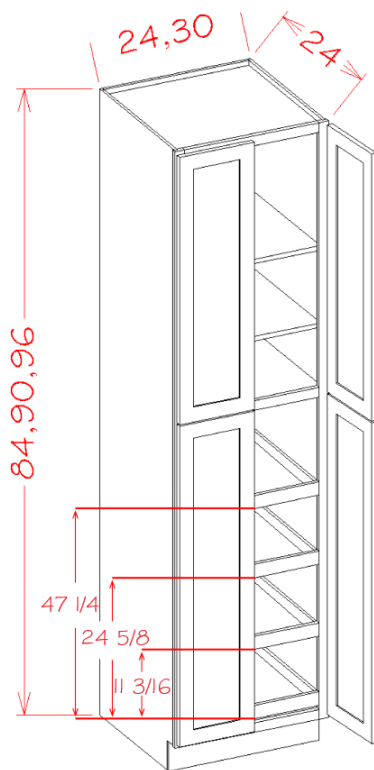


- Shaker & Torrance doors have a horizontal rail in the center of the bottom door.
- Assembled cabinets with Rollout Shelf kits are ONLY installed as indicated in the line drawing

Model	Description	Width	Height	Depth
U188424RS	Cabinet Dimension	18	84	24
	Top Door Dimension	17½	29	¾
	Bottom Door Dimension	17½	49¼	¾
	Rollout Shelf	13⅜	3⅜	20⅞
U189024RS	Cabinet Dimension	18	90	24
	Top Door Dimension	17½	35	¾
	Bottom Door Dimension	17½	49¼	¾
	Rollout Shelf	13⅜	3⅜	20⅞
U189624RS	Cabinet Dimension	18	96	24
	Top Door Dimension	17½	41	¾
	Bottom Door Dimension	17½	49¼	¾
	Rollout Shelf	13⅜	3⅜	20⅞

- Five boxes will be received when ordering this cabinet kit flat pack.
- Rollout Shelf glides are side mounted ball bearing with no soft close.

Accessory Tall Cabinets - Four Door Utility Four Rollout Shelf Cabinet Kit

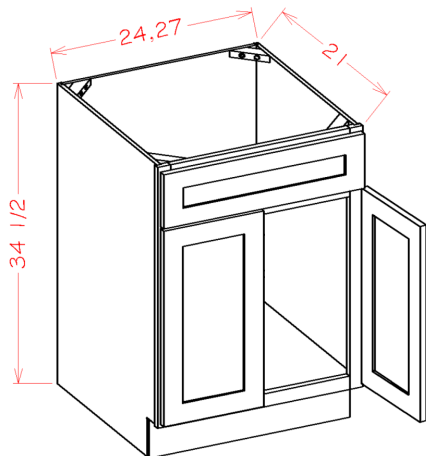


Model	Description	Width	Height	Depth
U2484244RS	Cabinet Dimension	24	84	24
	Top Door Dimension	11¾	29	¾
	Bottom Door Dimension	11¾	49¼	¾
	Rollout Shelf	19½	3⅜	20⅞
U2490244RS	Cabinet Dimension	24	90	24
	Top Door Dimension	11¾	35	¾
	Bottom Door Dimension	11¾	49¼	¾
	Rollout Shelf	19½	3⅜	20⅞
U2496244RS	Cabinet Dimension	24	96	24
	Top Door Dimension	11¾	41	¾
	Bottom Door Dimension	11¾	49¼	¾
	Rollout Shelf	19½	3⅜	20⅞
U3090244RS	Cabinet Dimension	30	90	24
	Top Door Dimension	14¾	35	¾
	Bottom Door Dimension	14¾	49¼	¾
	Rollout Shelf	25⅜	3⅜	20⅞
U3096244RS	Cabinet Dimension	30	96	24
	Top Door Dimension	14¾	41	¾
	Bottom Door Dimension	14¾	49¼	¾
	Rollout Shelf	25⅜	3⅜	20⅞

- Shaker & Torrance doors have a horizontal rail in the center of the bottom door.
- Assembled cabinets with Rollout Shelf kits are **ONLY** installed as indicated in the line drawing
- Five boxes will be received when ordering this cabinet kit flat pack.
- Rollout Shelf glides are side mounted ball bearing with no soft close.

PRODUCT SPECIFICATIONS

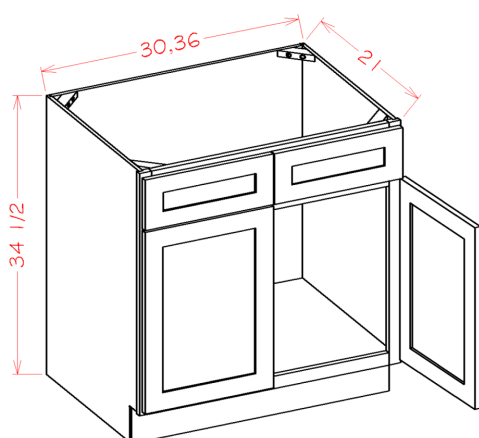
Vanity Sink Bases - Double Door Single Drawer Front



Model	Description	Width	Height	Depth
VS24	Cabinet Dimension	24	34½	21
	Door Dimension	11¾	22½	¾
	Drawer Front	23½	6¼	¾
VS27	Cabinet Dimension	27	34½	21
	Door Dimension	13¾	22½	¾
	Drawer Front	26½	6¼	¾

71

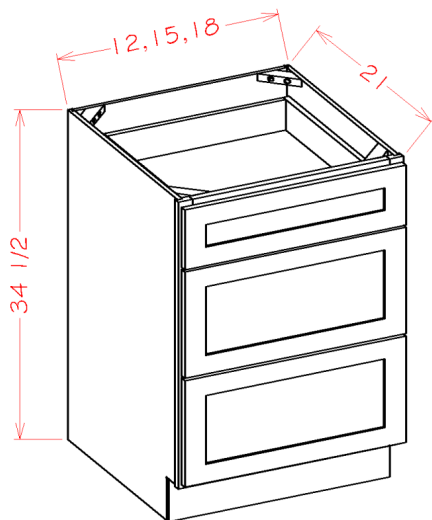
Vanity Sink Bases - Double Door Double Drawer Front



Model	Description	Width	Height	Depth
VS30	Cabinet Dimension	30	34½	21
	Door Dimension	14¾	22½	¾
	Drawer Front	14¾	6¼	¾
VS36	Cabinet Dimension	36	34½	21
	Door Dimension	17¾	22½	¾
	Drawer Front	17¾	6¼	¾

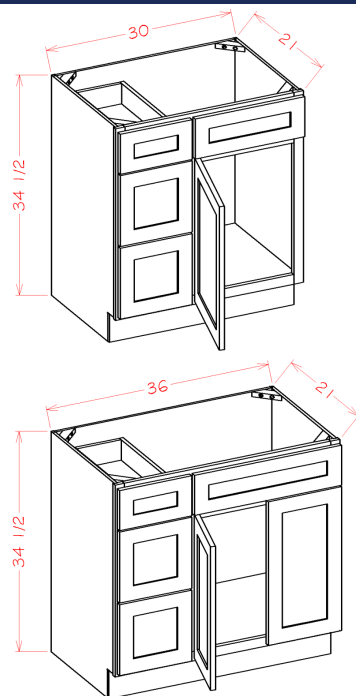
PRODUCT SPECIFICATIONS

Vanity Drawer Bases



Model	Description	Width	Height	Depth
3VDB12	Cabinet Dimension	12	34½	21
	Top Drawer Front	11½	6¼	¾
	Bottom Drawer Front	11½	11⅞	¾
	Top Drawer Box	8	3⅜	17⅜
	Bottom Drawer Box	8	8¼	17⅜
3VDB15	Cabinet Dimension	15	34½	21
	Top Drawer Front	14½	6¼	¾
	Bottom Drawer Front	14½	11⅞	¾
	Top Drawer Box	11	3⅜	17⅜
	Bottom Drawer Box	11	8¼	17⅜
3VDB18	Cabinet Dimension	18	34½	21
	Top Drawer Front	17½	6¼	¾
	Bottom Drawer Front	17½	11⅞	¾
	Top Drawer Box	14	3⅜	17⅜
	Bottom Drawer Box	14	8¼	17⅜

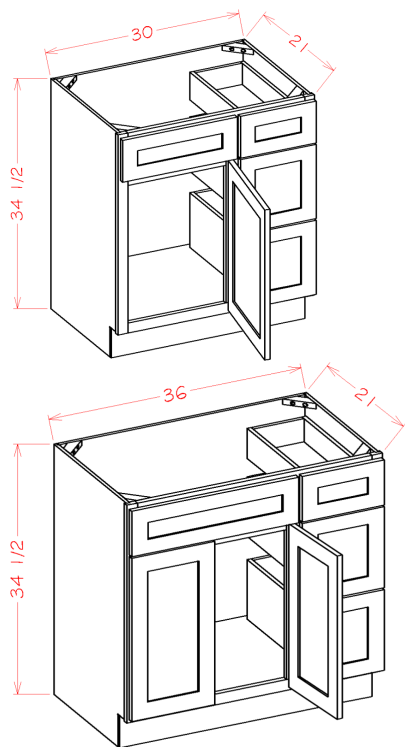
Vanity Combo Bases - Drawers Left



Model	Description	Width	Height	Depth
V3021DL	Cabinet Dimension	30	34½	21
	Top Drawer Front	11½	6¼	¾
	Bottom Drawer Front	11½	11⅞	¾
	Top Long Drawer Front	17½	6¼	¾
	Top Drawer Box	8	3⅜	18
	Bottom Drawer Box	8	8¼	18
	Door Dimension	17½	22½	¾
V3621DL	Cabinet Dimension	36	34½	21
	Top Drawer Front	11½	6¼	¾
	Bottom Drawer Front	11½	11⅞	¾
	Top Long Drawer Front	23½	6¼	¾
	Top Drawer Box	8	3⅜	18
	Bottom Drawer Box	8	8¼	18
	Door Dimension	11¾	22½	¾

PRODUCT SPECIFICATIONS

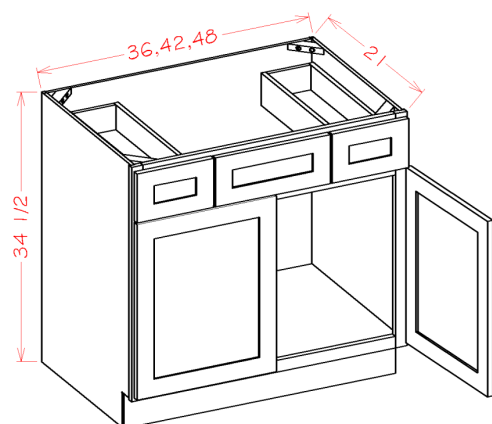
Vanity Combo Bases - Drawers Right



Model	Description	Width	Height	Depth
V3021DR	Cabinet Dimension	30	34½	21
	Top Drawer Front	11½	6¼	¾
	Bottom Drawer Front	11½	11⅛	¾
	Top Long Drawer Front	17½	6¼	¾
	Top Drawer Box	8	3⅜	18
	Bottom Drawer Box	8	8¼	18
	Door Dimension	17½	22½	¾
V3621DR	Cabinet Dimension	36	34½	21
	Top Drawer Front	11½	6¼	¾
	Bottom Drawer Front	11½	11⅛	¾
	Top Long Drawer Front	23½	6¼	¾
	Top Drawer Box	8	3⅜	18
	Bottom Drawer Box	8	8¼	18
	Door Dimension	11¾	22½	¾

73

Vanity Combo Bases

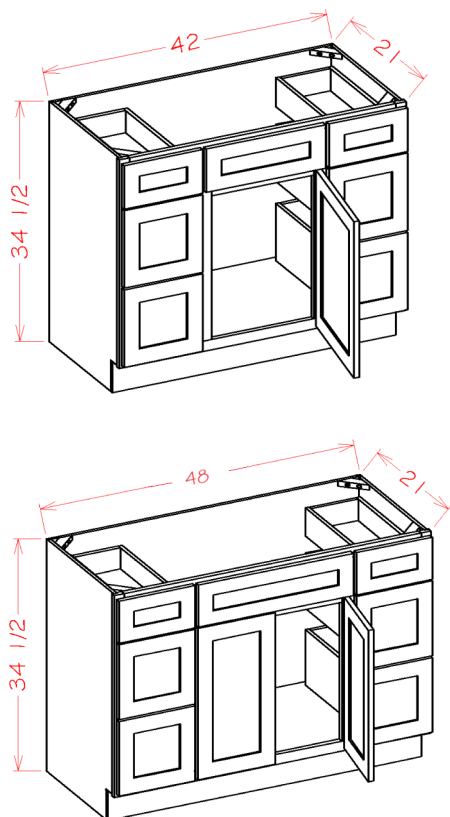


- The VSD42 & 48 have a center stile.

Model	Description	Width	Height	Depth
VSD36	Cabinet Dimension	36	34½	21
	Door Dimension	17¾	22½	¾
	Outside Drawer Front	10¼	6¼	¾
	Center Drawer Front	14½	6¼	¾
	Drawer Box	7⅜	3¼	17⅜
VSD42	Cabinet Dimension	42	34½	21
	Door Dimension	20¾	22½	¾
	Outside Drawer Front	11½	6¼	¾
	Center Drawer Front	18	6¼	¾
	Drawer Box	8⅞	3¼	17⅜
VSD48	Cabinet Dimension	48	34½	21
	Door Dimension	23¾	22½	¾
	Outside Drawer Front	14½	6¼	¾
	Center Drawer Front	18	6¼	¾
	Drawer Box	11⅜	3¼	17⅜

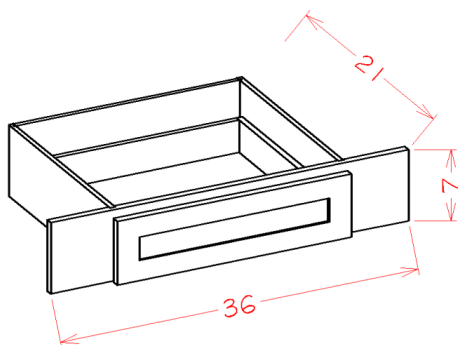
PRODUCT SPECIFICATIONS

Vanity Combo Bases - Double Drawer Stack



Model	Description	Width	Height	Depth
VDDB42	Cabinet Dimension	42	34½	21
	Top Drawer Front	11½	6¼	¾
	Bottom Drawer Front	11½	11⅛	¾
	Top Long Drawer Front	17⅝	6¼	¾
	Top Drawer Box	8½	3⅜	18
	Bottom Drawer Box	8½	8¼	18
	Door Dimension	17⅝	22½	¾
VDDB48	Cabinet Dimension	48	34½	21
	Top Drawer Front	11½	6¼	¾
	Bottom Drawer Front	11½	11⅛	¾
	Top Long Drawer Front	23⅝	6¼	¾
	Top Drawer Box	8½	3⅜	18
	Bottom Drawer Box	8½	8¼	18
	Door Dimension	11¾	22½	¾

Special Vanity - Vanity Knee Drawer

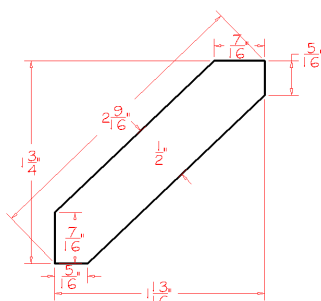


Model	Description	Width	Height	Depth
VKD36	Cabinet Dimension	36	7	21
	Drawer Front	23½	6¼	¾
	Drawer Box	19¾	3⅜	17⅜

- Trimmable to 27" wide

PRODUCT SPECIFICATIONS

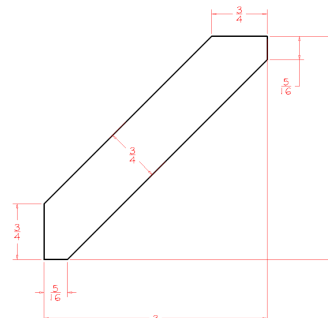
Crown Moulding - 1 3/4"H Angled Crown Moulding



Model	Description	Width	Height	Depth
ACM8	Dimension	96	1 3/4	1 13/16

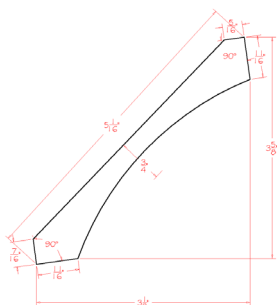
- Not available in Casselberry or York Styles

Crown Moulding - 3"H Angled Crown Moulding



Model	Description	Width	Height	Depth
LACM8	Dimension	96	3	3

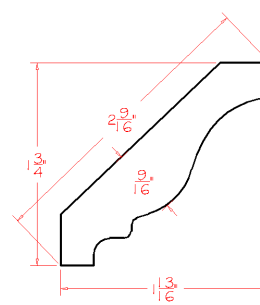
Crown Moulding - Cove Moulding



Model	Description	Width	Height	Depth
COV	Dimension	96	3 5/8	3 1/2

- Not available in Casselberry Styles

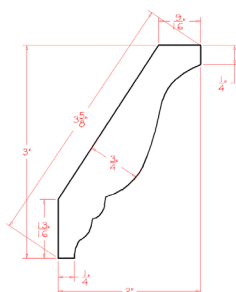
Crown Moulding - Classic Crown Moulding



Model	Description	Width	Height	Depth
CM8	Dimension	96	1 3/4	1 13/16

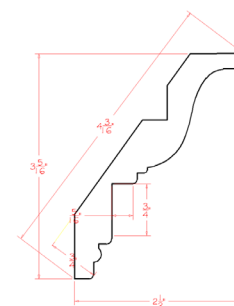
- Not available in Shaker or Torrance Styles

Crown Moulding - Decorative Crown Moulding



Model	Description	Width	Height	Depth
DCM	Dimension	96	3	2

Crown Moulding - Inset Crown Moulding

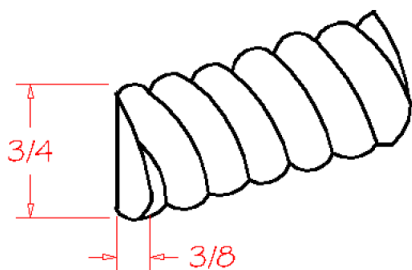


Model	Description	Width	Height	Depth
ICM	Dimension	96	3 5/16	2 1/2

- Not available in Shaker or Torrance Styles

PRODUCT SPECIFICATIONS

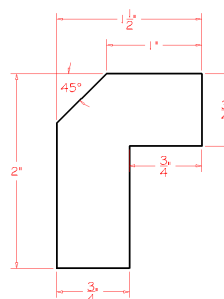
Mouldings - Rope Moulding



Model	Description	Width	Height	Depth
ROPE	Dimension	96	3/4	3/8

- Not available in Shaker or Torrance Styles

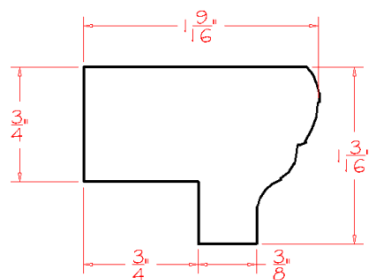
Mouldings - Angled Light Rail Moulding



Model	Description	Width	Height	Depth
ALRM	Dimension	96	1 1/2	2

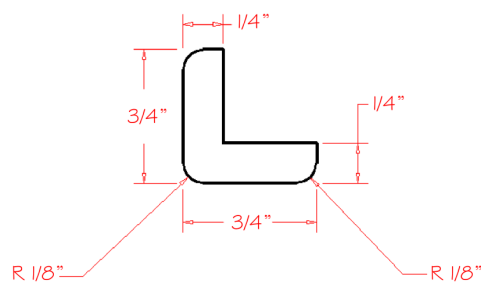
- Not available in Casselberry or York Styles

Mouldings - Light Rail Moulding



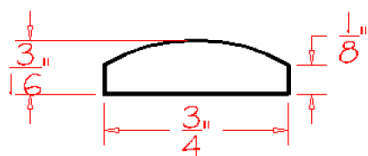
Model	Description	Width	Height	Depth
LRM	Dimension	96	1 3/16	1 9/16

Mouldings - Outside Corner Moulding



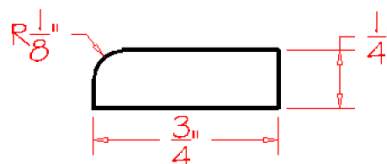
Model	Description	Width	Height	Depth
OCM	Dimension	96	3/4	3/4

Mouldings - Batten Moulding



Model	Description	Width	Height	Depth
BAM	Dimension	96	3/4	3/16

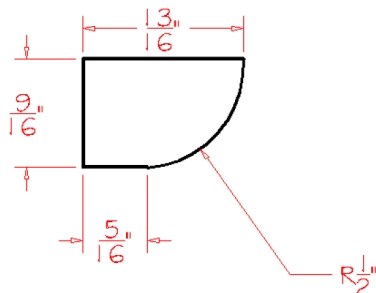
Mouldings - Scribe Moulding



Model	Description	Width	Height	Depth
SCR	Dimension	96	3/4	1/4

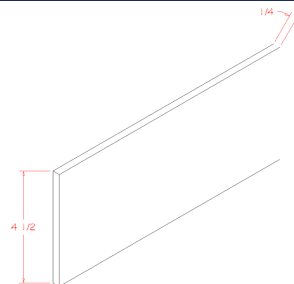
PRODUCT SPECIFICATIONS

Mouldings - Shoe Moulding



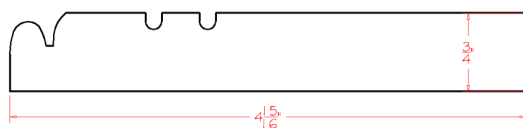
Model	Description	Width	Height	Depth
SHM	Dimension	96	3/4	1/2

Mouldings - Toe Kick Cover



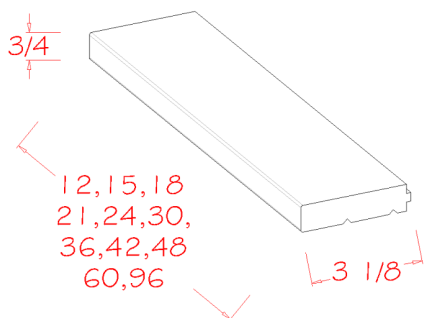
Model	Description	Width	Height	Depth
TKC	Dimension	96	4 1/2	1/4

Mouldings - Furniture Base Moulding



Model	Description	Width	Height	Depth
FBM	Dimension	96	4 5/16	3/4

Toe Kick Apron Support

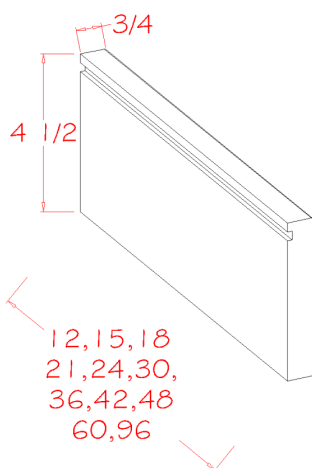


- Finished on all sides and edges
- Required for use with Toe Kick Apron Mouldings & Bun Feet

Model	Description	Width	Height	Depth
TAS12	Dimension	12	3/4	3 1/8
TAS15	Dimension	15	3/4	3 1/8
TAS18	Dimension	18	3/4	3 1/8
TAS21	Dimension	21	3/4	3 1/8
TAS24	Dimension	24	3/4	3 1/8
TAS30	Dimension	30	3/4	3 1/8
TAS36	Dimension	36	3/4	3 1/8
TAS42	Dimension	42	3/4	3 1/8
TAS48	Dimension	48	3/4	3 1/8
TAS60	Dimension	60	3/4	3 1/8
TAS96	Dimension	96	3/4	3 1/8

PRODUCT SPECIFICATIONS

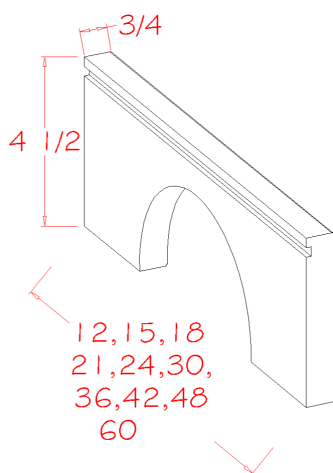
Toe Kick Apron Moulding



Model	Description	Width	Height	Depth
TAM12	Dimension	12	4½	¾
TAM15	Dimension	15	4½	¾
TAM18	Dimension	18	4½	¾
TAM21	Dimension	21	4½	¾
TAM24	Dimension	24	4½	¾
TAM30	Dimension	30	4½	¾
TAM36	Dimension	36	4½	¾
TAM42	Dimension	42	4½	¾
TAM48	Dimension	48	4½	¾
TAM60	Dimension	60	4½	¾
TAM96	Dimension	96	4½	¾

- Finished on all sides and edges
- Must be used with Toe Kick Apron Support (TAS)

Toe Kick Arched Apron Moulding

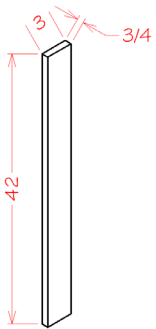


Model	Description	Width	Height	Depth
TAA12	Dimension	12	4½	¾
TAA15	Dimension	15	4½	¾
TAA18	Dimension	18	4½	¾
TAA21	Dimension	21	4½	¾
TAA24	Dimension	24	4½	¾
TAA30	Dimension	30	4½	¾
TAA36	Dimension	36	4½	¾
TAA42	Dimension	42	4½	¾
TAA48	Dimension	48	4½	¾
TAA60	Dimension	60	4½	¾

- Finished on all sides and edges
- Must be used with Toe Kick Apron Support (TAS)
- Trimmable up to 1½" on each side

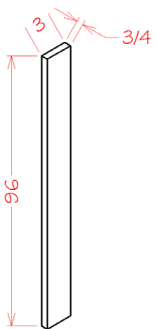
PRODUCT SPECIFICATIONS

Fillers - 3" Wall/Base Filler



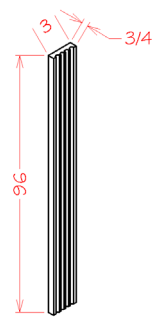
Model	Description	Width	Height	Depth
F342	Dimension	3	42	3/4

Fillers - 3" Tall Filler



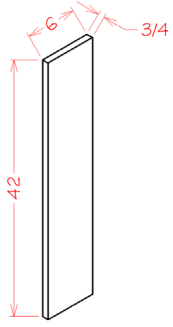
Model	Description	Width	Height	Depth
F396	Dimension	3	96	3/4

Fillers - 3" Fluted Filler



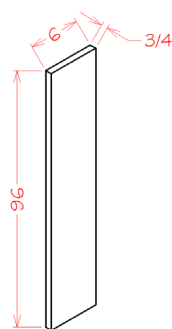
Model	Description	Width	Height	Depth
FF396	Dimension	3	96	3/4

Fillers - 6" Wall/Base Filler



Model	Description	Width	Height	Depth
F642	Dimension	6	42	3/4

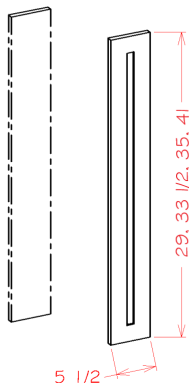
Fillers - 6" Tall Filler



Model	Description	Width	Height	Depth
F696	Dimension	6	96	3/4

PRODUCT SPECIFICATIONS

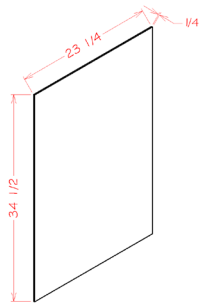
Filler Overlays



Model	Description	Width	Height	Depth
FOL630	Dimension	5½	29	¾
FOL634	Dimension	5½	33½	¾
FOL636	Dimension	5½	35	¾
FOL642	Dimension	5½	41	¾

- Filler overlays have a matching door profile.
- 6" filler required for application (purchased separately)

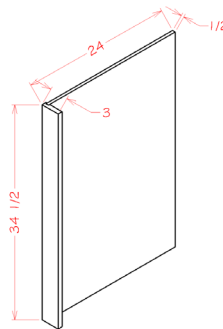
Panels - Base Skin Panel



Model	Description	Width	Height	Depth
BSV	Dimension	23¼	34½	¼

- Only finished on one side

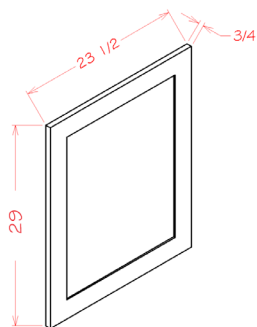
Panels - Dishwasher Return Panel



Model	Description	Width	Height	Depth
DWR3	Dimension	3	34½	24

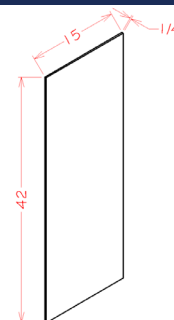
PRODUCT SPECIFICATIONS

Panels - Base Decorative End Panel



Model	Description	Width	Height	Depth
BDEP	Dimension	23 1/2	29	3/4

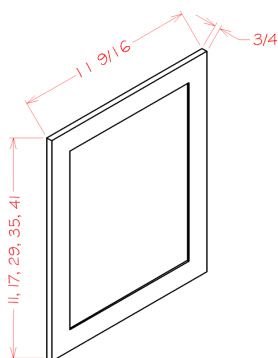
Panels - Wall Skin Panel



Model	Description	Width	Height	Depth
WSV42	Dimension	15	42	1/4

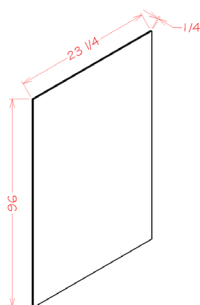
- Only finished on one side

Panels - Wall Decorative End Panel



Model	Description	Width	Height	Depth
WDEP1212	Dimension	11 1/2	11	3/4
WDEP1218	Dimension	11 1/2	17	3/4
WDEP30	Dimension	11 1/2	29	3/4
WDEP36	Dimension	11 1/2	35	3/4
WDEP42	Dimension	11 1/2	41	3/4

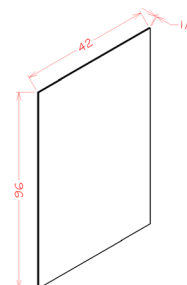
Panels - Utility Skin Panel



Model	Description	Width	Height	Depth
USV2496	Dimension	23 1/4	96	1/4

- Only finished on one side

Panels - Long Skin Panel



Model	Description	Width	Height	Depth
FPV4296	Dimension	42	96	1/4

- Grain runs long way
- Only finished on one side

PRODUCT SPECIFICATIONS

Panels - Bead Board Panel

Model	Description	Width	Height	Depth
BBFPV4296	Dimension	42	96	1/4

Panels - Finished Shelf Board

Model	Description	Width	Height	Depth
S2496	Dimension	24	96	3/4

- One long edge banded to match
- Finished on both sides

Panels - Refrigerator End Panel

Model	Description	Width	Height	Depth
REP3096	Dimension	1 1/2	96	3/4

Panels -Tall Decorative End Panel

Model	Description	Width	Height	Depth
TDEP2484	Dimension	23 1/2	78 1/2	3/4
TDEP2490	Dimension	23 1/2	84 1/2	3/4
TDEP2496	Dimension	23 1/2	90 1/2	3/4

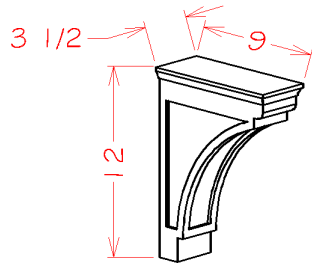
- Shaker & Torrance panels have horizontal rail in the center of the bottom panel.

Panels -Vanity Decorative End Panel

Model	Description	Width	Height	Depth
VDEP	Dimension	20 1/2	29	3/4

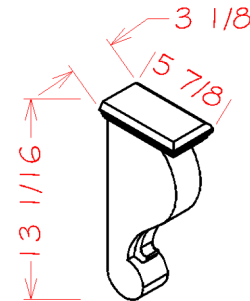
PRODUCT SPECIFICATIONS

Corbels - Modern Corbel



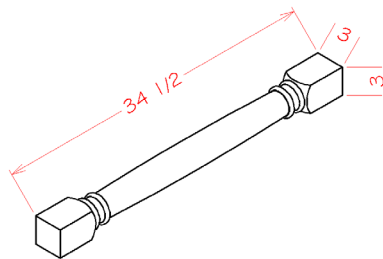
Model	Description	Width	Height	Depth
MCB	Dimension	3 1/2	12	9

Corbels - Traditional Corbel



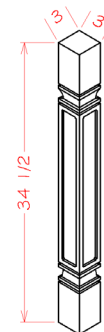
Model	Description	Width	Height	Depth
CBT	Dimension	3 1/8	13 1/16	5 7/8

Decorative Legs - Classic Decorative Leg



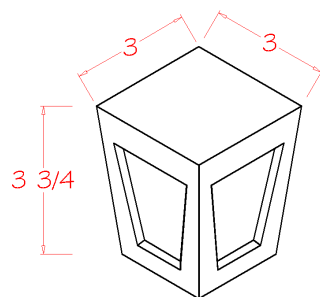
Model	Description	Width	Height	Depth
CLDL	Dimension	3	34 1/2	3

Decorative Legs - Square Decorative Leg



Model	Description	Width	Height	Depth
SQDL	Dimension	3	34 1/2	3

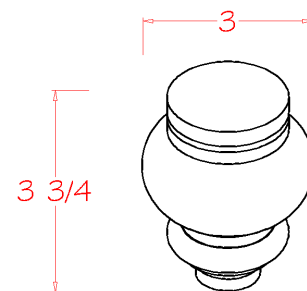
Bun Feet - Taper Foot



Model	Description	Width	Height	Depth
TF4	Dimension	3	3 3/4	3

- Must be used with Toe Kick Apron Support (TAS)

Bun Feet - Circle Foot

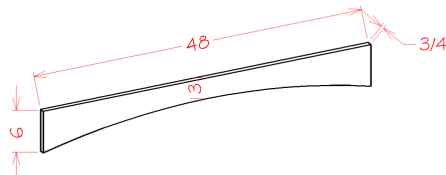


Model	Description	Width	Height	Depth
CF4	Dimension	3	3 3/4	3

- Must be used with Toe Kick Apron Support (TAS)

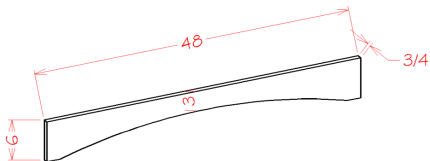
PRODUCT SPECIFICATIONS

Valances - Arched Valance



Model	Description	Width	Height	Depth
VA48	Dimension	48	6	3/4

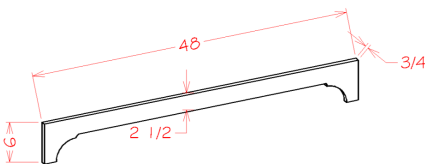
Valances - Shaker Valance



Model	Description	Width	Height	Depth
VASH48	Dimension	48	6	3/4

- Trimmable on each side by 1 1/4"
- Finished on both sides and two long edges

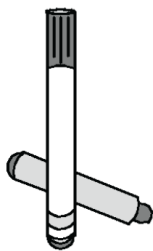
Valances - Crown Valance



Model	Description	Width	Height	Depth
VACR48	Dimension	48	6	3/4

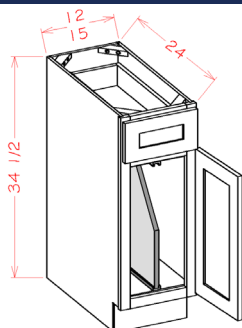
- Trimmable on each side by 1 1/4"
- Finished on both sides and two long edges

Touch Up Kit - TUK



PRODUCT SPECIFICATIONS

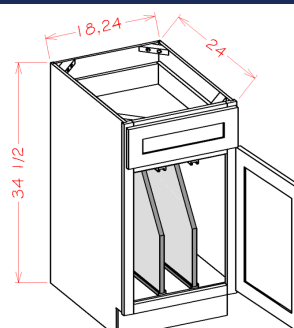
Accessories - Base Tray Divider



Model	Description	Width	Height	Depth
B12TDKIT	Dimension	¾	21	22½
B15TDKIT	Dimension	¾	21	22½

- Comes with one divider

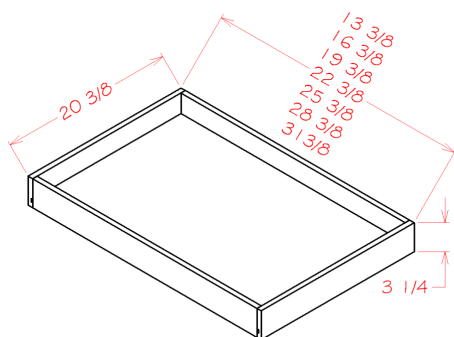
Accessories - Base Tray Dividers



Model	Description	Width	Height	Depth
B18TDKIT	Dimension	¾	21	22½

- Comes with two dividers

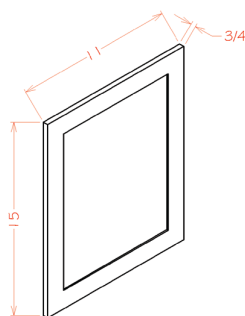
Roll Out Shelves



Model	Description	Width	Height	Depth
RS18-Type A	Dimension	13⅜	3⅜	20⅞
RS21-Type A	Dimension	16⅜	3⅜	20⅞
RS24-Type A	Dimension	19½	3⅜	20⅞
RS27-Type A	Dimension	22½	3⅜	20⅞
RS30-Type A	Dimension	25⅜	3⅜	20⅞
RS33-Type A	Dimension	28⅜	3⅜	20⅞
RS36-Type A	Dimension	31⅜	3⅜	20⅞

- Glides are side mounted ball bearing with no soft close.

Sample Door - SD



Model	Description	Width	Height	Depth
SD	Dimension	11	15	¾